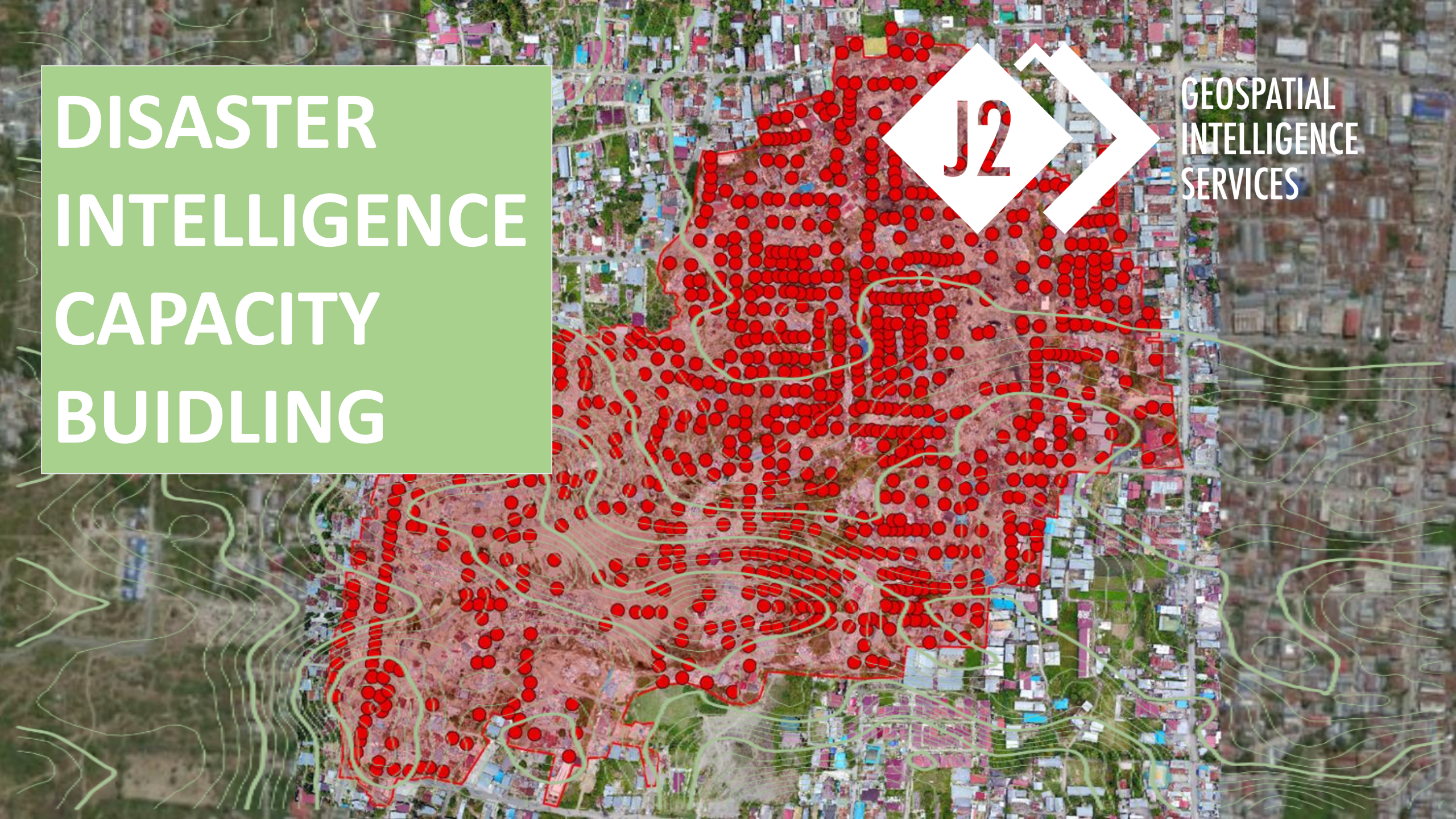


DISASTER INTELLIGENCE CAPACITY BUILDING



GEOSPATIAL
INTELLIGENCE
SERVICES



AGENDA

- Who is J2 Geospatial Intelligence Services
- What, How and Why we do it
- Disaster Intelligence Services: Proactive and Reactive
- General Capabilities and Case Studies
- Our approach to capacity-building
- Team-building process and structure
- Veteran-led model: why& how it works
- Why this initiative is important to us
- Q and A



GEOSPATIAL
INTELLIGENCE
SERVICES



J2 Geospatial Intelligence Services and Disaster Relief Australia: WHO, WHAT WHY and HOW



GEOSPATIAL
INTELLIGENCE
SERVICES

WHO:

J2 is the social enterprise of the charity Disaster Relief Australia. J2 delivers professional geospatial and disaster intelligence service to fund DRA's charitable cause of veteran-led disaster relief

WHAT:

Empowers decision making by delivering socially responsible, world-class, commercial geospatial intelligence services across multiple sectors. J2's integrated, layered data produces vivid and detailed portrayals of landscapes, communities, and their interconnected relationships.

WHY:

service with purpose

we are driven by delivering professional, industry leading services while supporting Disaster Relief Australia (DRA) and its volunteers. J2's profits are contributed back to DRA. We also offer professional development and employment opportunities to DRA volunteers looking to further their career in the Geospatial Intelligence field.

HOW:

craft precise, high-impact geospatial solutions

by working in the air, on the ground and behind the scenes. we deliver a vertically integrated set of services spanning data capture, processing and analysis. Utilising tier-one technology, our intelligence roots and extensive experience, we bring unique perspectives evolved from military tradecraft and community-driven insights.



DISASTER
INTELLIGENCE
SERVICES:
Proactive
& Reactive

Proactive and Reactive Services

Proactive

- Hazard Exposure Mapping
- 'Disaster Wise' Assessments

Reactive

- Small Drone Team deployments to conduct rapid impact assessment and provide situational awareness
- Impact mapping and critical infrastructure damage assessments
- Common operating picture creation and maintenance



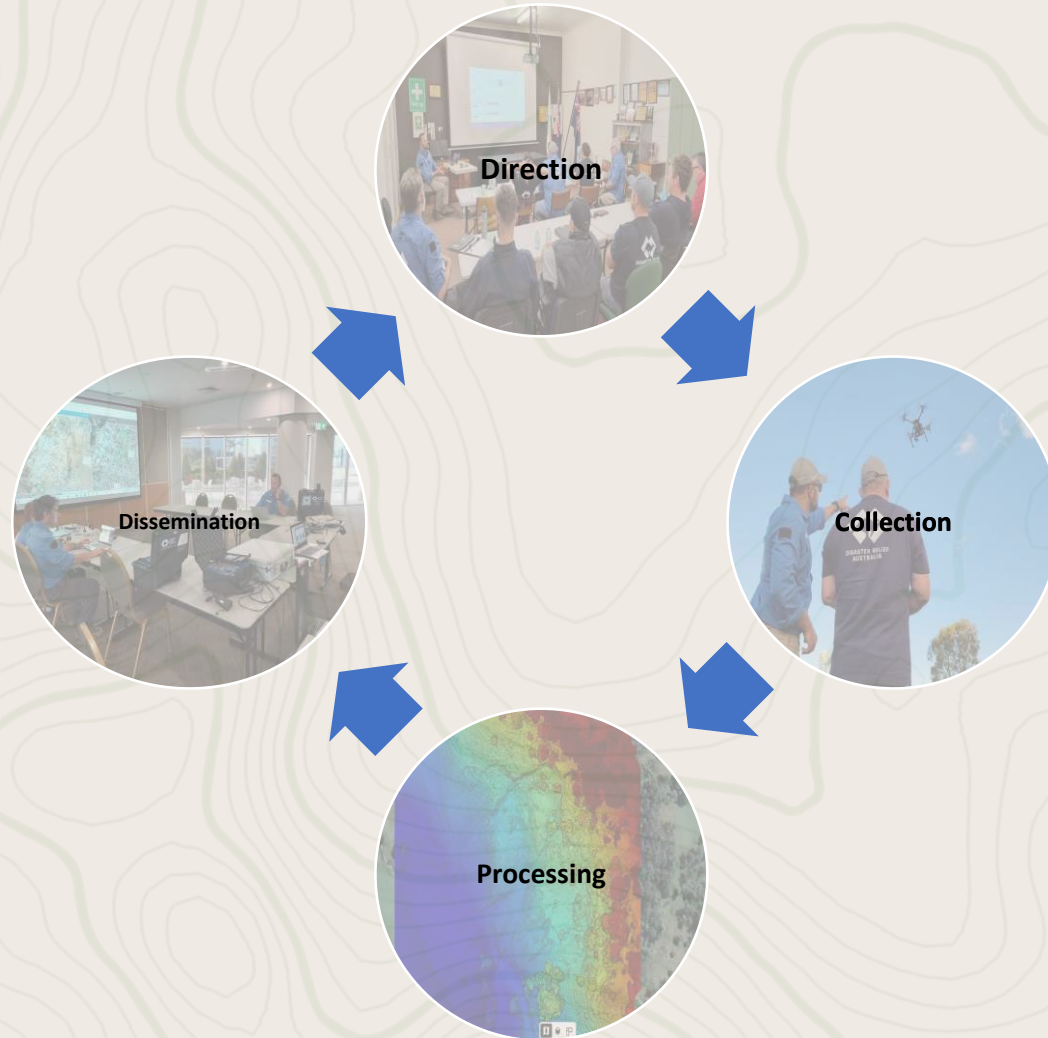


GENERAL CAPABILITIES & CASE STUDIES

Capabilities

- Small drone pilot teams of 2 people
 - CASA licensed RPAS Pilots (aligned with ICAO standards)
- Geospatial Intelligence Analysts
- Multicopter and eVTOL Drones
- RGB, Thermal, Multispectral and LiDAR Imagery sensors
- Utilise Satellite, Manned aircraft and Drone mapping
- 2D and 3D models using photogrammetry and LiDAR point clouds
- ArcGIS and QGIS software
- Fulcrum Damage Assessment Software
- Staff located throughout Australia
- Surge capacity support to external agencies

Intelligence Cycle



J2 Intelligence Cycle

Field Team

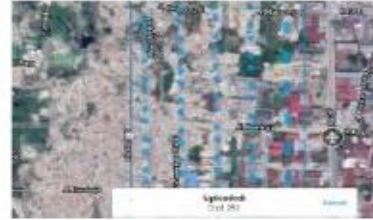
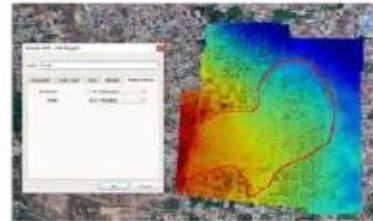


Image Analysts



AUSTRALIAN FLOODS

Northern NSW



GEOSPATIAL
INTELLIGENCE
SERVICES

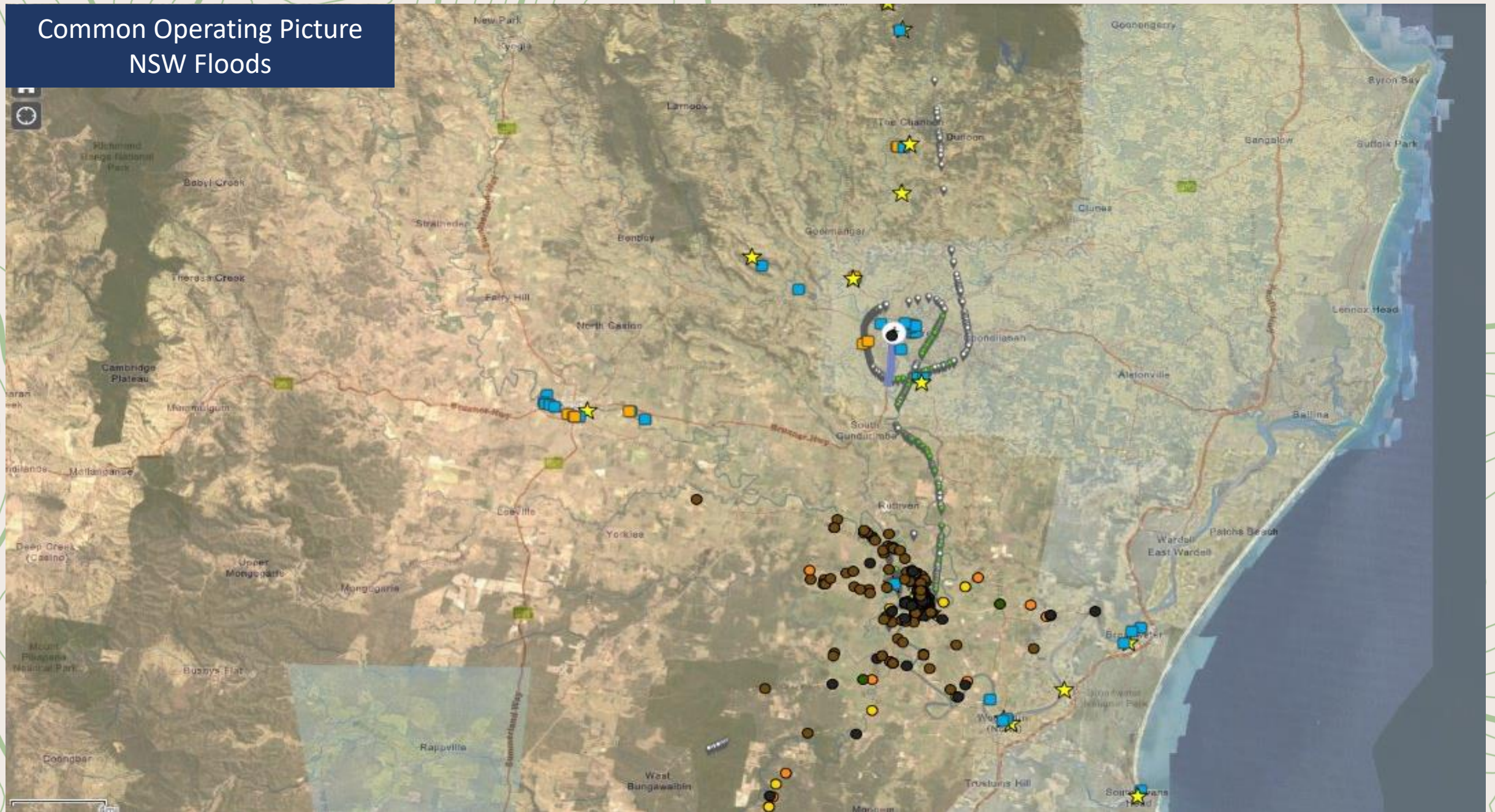


NSW Floods

221 flights captured by 3 two-person teams over 2 weeks

- 360 degree panoramas
- 2D and 3D maps
- Landslip and critical infrastructure mapping
- Volumetric measurements
- Ground based 360 degree “streetview” mapping

Common Operating Picture NSW Floods



Common Operating Picture Town of Coraki NSW



Coraki NSW



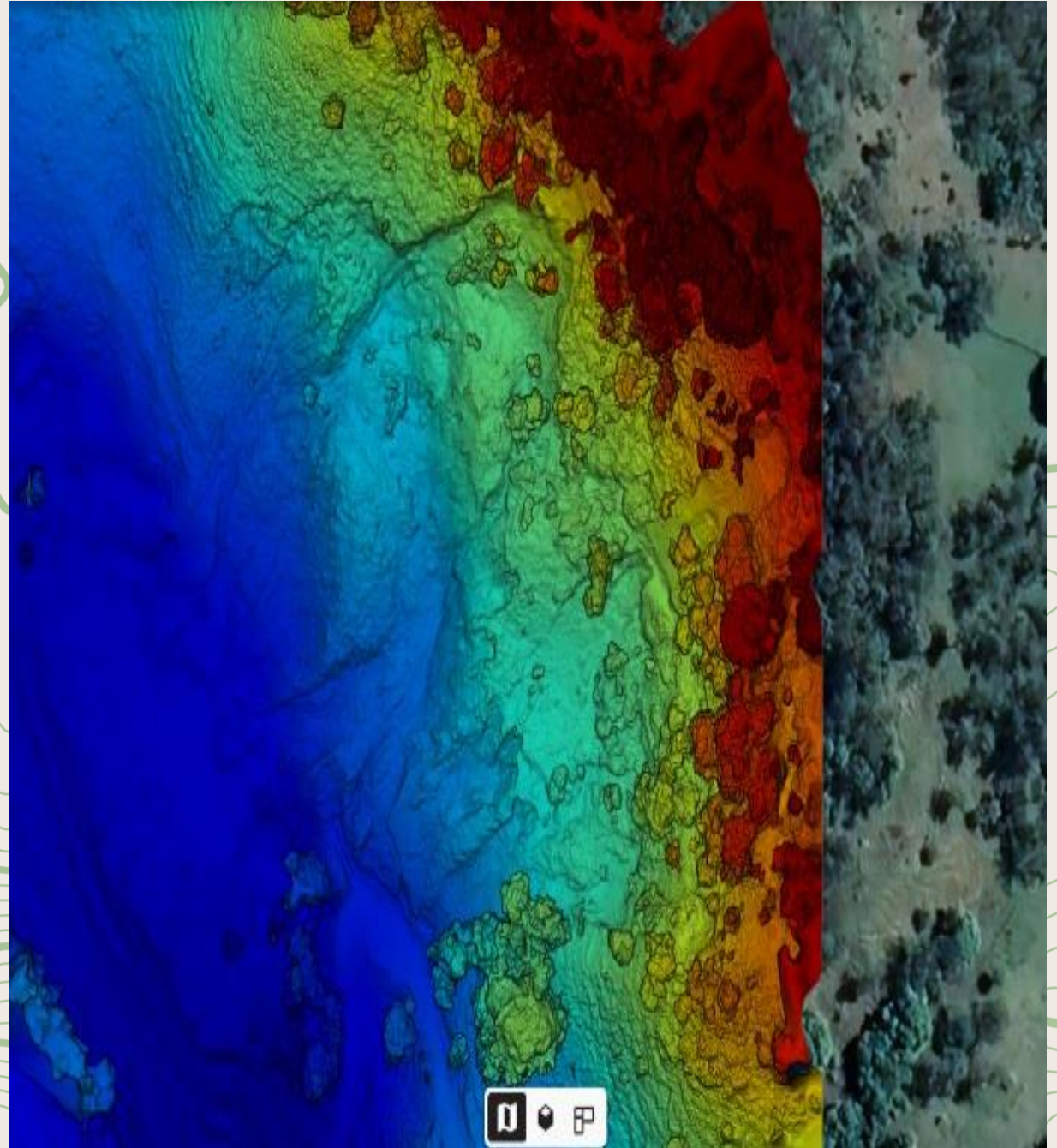
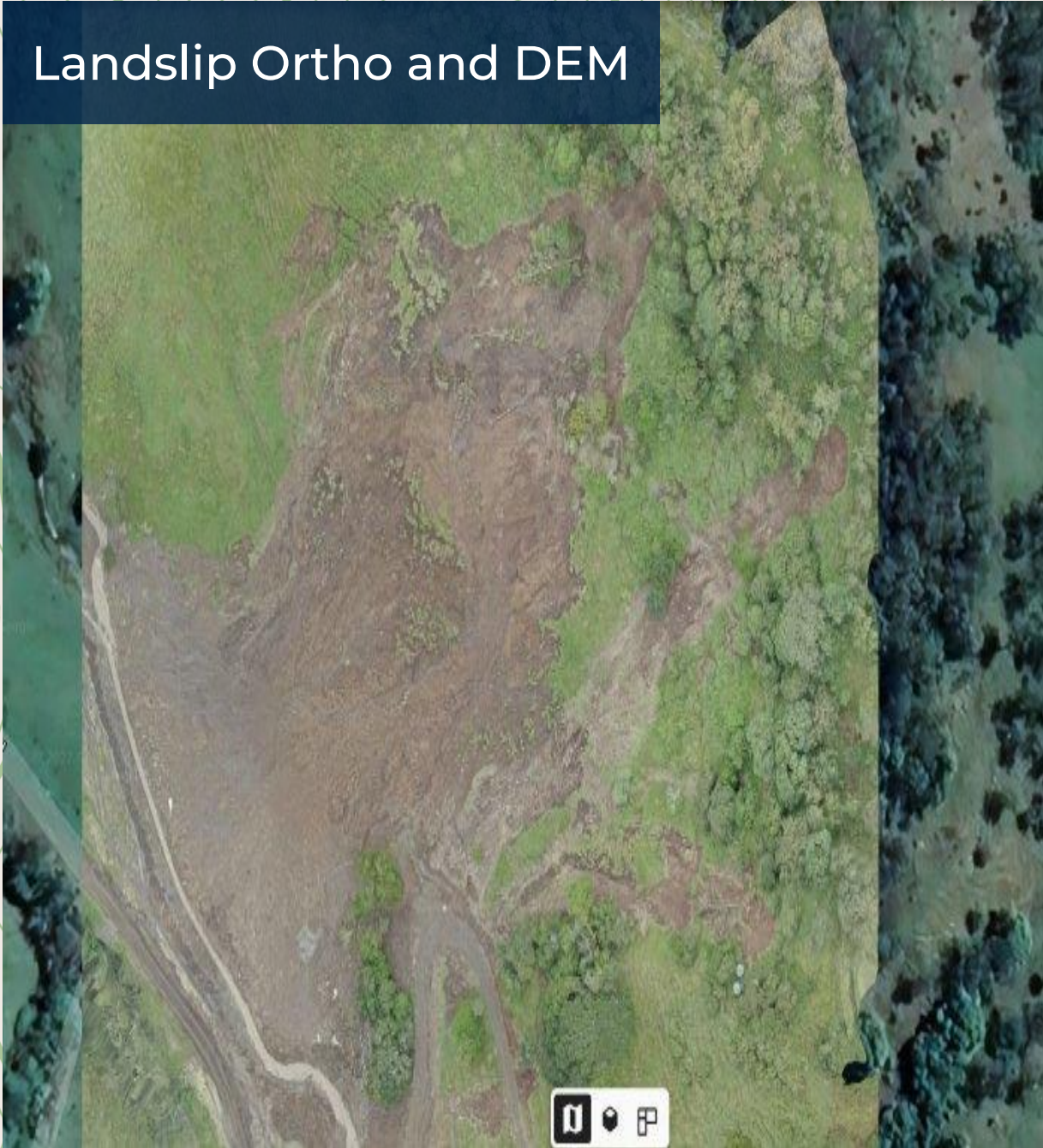
Coraki NSW



Erosion Mapping 3D - Casino



Landslip Ortho and DEM





< Exterior Interior

▶ 🎬 🔍 📷 📐 📺 2D 3D

Rotation speed

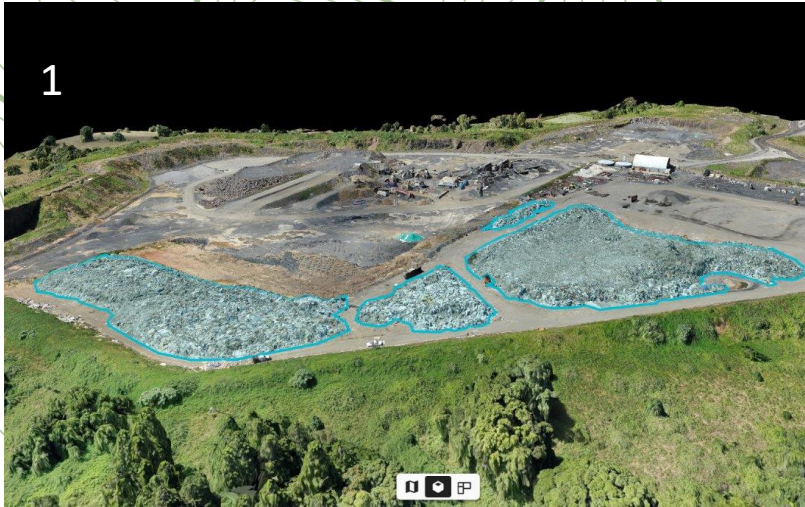


👉 📍 📏 🔍 123 📐 🔄 🏠



Exterior





1. Quarry Waste Volumetric Stockpile measurement
2. Waste Facility Volumetric Measurements
3. Waste Facility Tailings Dam Integrity Assessment
4. Sewerage Treatment Plant Damage Assessment



J2 APPROACH TO CAPACITY & TEAM BUILDING



Capacity Building Approach

- Establish a local, organic capability
- Low-cost model:
 - Equipment
 - Softwares
 - Train-the-Trainer
- Teams of Pilots and Analysts are volunteers
- Driven by a strong culture and confident operating model
- Ensuring surge support and advisory- IF and WHEN needed



GEOSPATIAL
INTELLIGENCE
SERVICES

Team- building process & structure

- Volunteer recruitment
- Creating a positive and motivated culture
- Geographic distribution
- Equipment caches
- Ability to mobilize and deploy
- Low-drag but cohesive command and control
- Ensuring an localized, organic capability



GEOSPATIAL
INTELLIGENCE
SERVICES

Veteran-led model and why it works

- Dual-value proposition:
 - Impactful disaster relief
 - Professional development and Veteran reintegration back to civilian society
- Value of continued service back to communities
- Common language, processes & prior training
- Agile command and control
- Repurposing of defence-skills ideal for disaster relief
- Not exclusive to veterans – inclusive to emergency services and skilled-civilians
- So what if there are no veterans?



GEOSPATIAL
INTELLIGENCE
SERVICES

Why this initiative is important

- We are a social-enterprise
- First-hand appreciation of how impactful this capability can be
- DRA's initial remit to work with regional partners
- Combating climate-change is a joint-effort
- Learn from each other
- Potential to expand into broader capacity building initiatives in disaster relief



GEOSPATIAL
INTELLIGENCE
SERVICES

QUESTIONS?



GEOSPATIAL
INTELLIGENCE
SERVICES



**GEOSPATIAL
INTELLIGENCE
SERVICES**

CONTACT US

MARKUS BUCY – EGM

BRENT HOADE – HEAD OF OPERATIONS

Phone number: +61 08 83236790

Address: 10 Greenhill Road, Wayville SA AUSTRALIA 5034

Email: enquiries@j2aus.org