

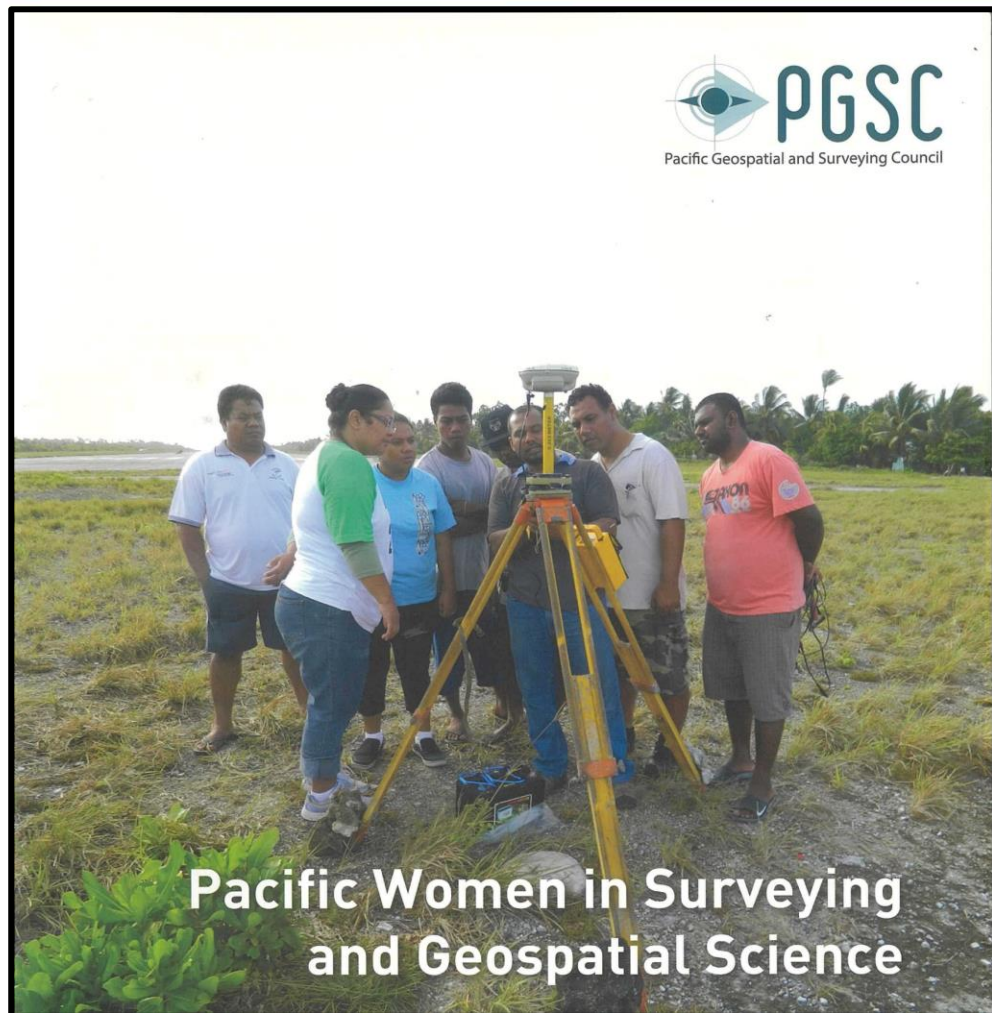
# Pacific Geospatial Women Network (PGWN)

**Pacific GIS and Remote Sensing Council Conference**

**26th November 2024**

**Jacqueline Singh, Salote Covilati & Zahrah Ali**

# Background



<https://pgsc.gem.spc.int/>



PGSC Chair, Mr. Vaipo Mataora from Cook Islands



PGSC Vice Chair, Meizyanne Hicks from Fiji



# Objectives

- To empower Pacific women by promoting Geospatial science education and career opportunities, fostering an inclusive community where women can learn, innovate, and lead in the geospatial field.
- Providing technical support and training at community level



Jacqueline  
Singh - Intern



Salote Covilati –  
Technical  
Assistant



Zahrah Ali -  
Intern



# Stakeholder Consultation



# Targeted Training Location



**1. Gusunituba Women Group: Votua Village, Ba**

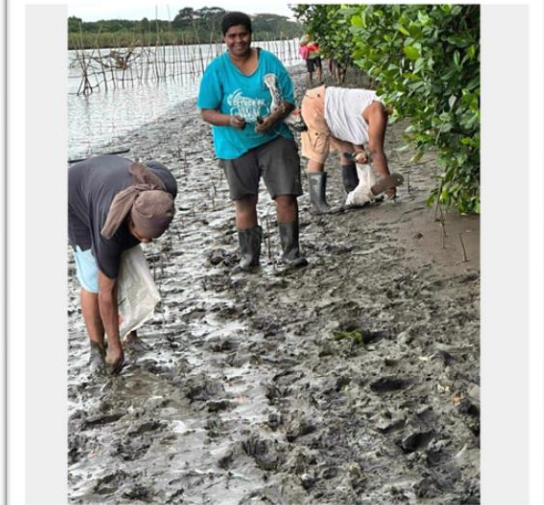
**2. Daku Women Group: Daku Village, Anitioki & Kaleli Settlements, Tailevu**

# The projects they are involved in:

<b>Gusunituba Women Group (Votua, Ba)</b>	<b>Daku Women Group (Daku, Tailevu)</b>
<b>Mangrove replanting along the Ba river</b>	<b>Mangrove rehabilitation/replanting in 3 sites.</b>
<b>Agricultural produce such as chillies, dalo, etc</b>	<b>Coconut replanting in 2 sites because of its historical importance in crafting Iri Buli, Daku Fan &amp; virgin oil.</b>
<b>Cocoa Planting</b>	<b>Native Species</b>

# The projects they are involved in:

- These two women group have been actively involved in community projects such as mangrove rehabilitation, coconut planting and agriculture planting under the **Jobs for Nature Funding** with the Ministry of Economy.



# Training Activities - 1



Participatory  
Mapping Activity of  
Areas of Focus





# Training Activities - 2

**Field work** – collecting data from their replanting areas. (example: mangroves, coconut, cocoa, etc)

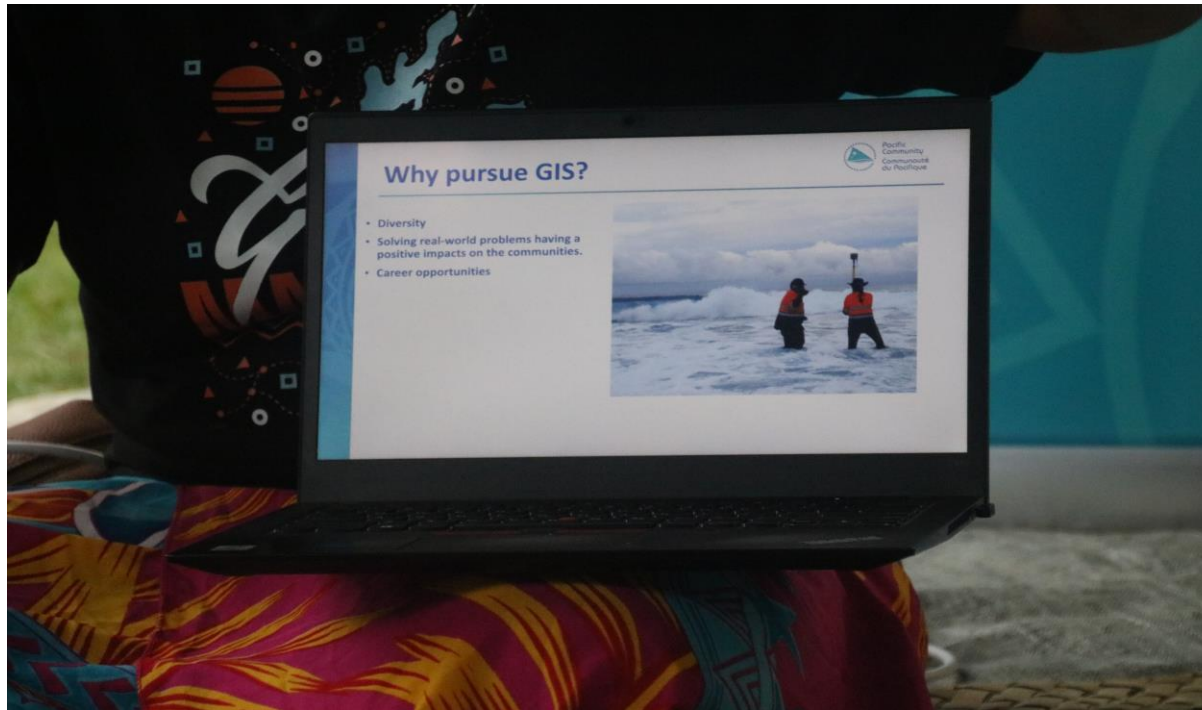
Empowering women to take charge of their **data collection** and **monitoring**.



# Training Activities - 3



# Girls Session



# Kobo Collect Survey

## Mangrove - (Gusunituba Women's Club) - Votua, Ba.

### General Information

Date and Time:

yyyy-mm-dd                      hh:mm

Which Mataqali do you belong to?

- Mataqali Korovou  
 Mataqali Natariqawa  
 Other

Please specify

### Mangrove plant details

The first Mangrove plant

latitude (x,y °)

longitude (x,y °)

altitude (m)

accuracy (m)



How many Mangroves are planted per line?

\_\_\_\_\_

Have you seen any animal in the area where you have planted the Mangroves?

- Yes  
 No

Please specify

\_\_\_\_\_

Main challenges in Mangrove Plantation:

- Pests and Diseases  
 Lack of Fresh Water  
 Soil Erosion  
 Other

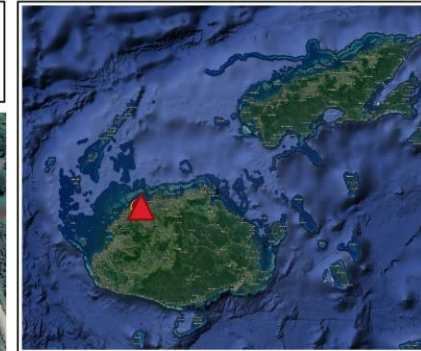
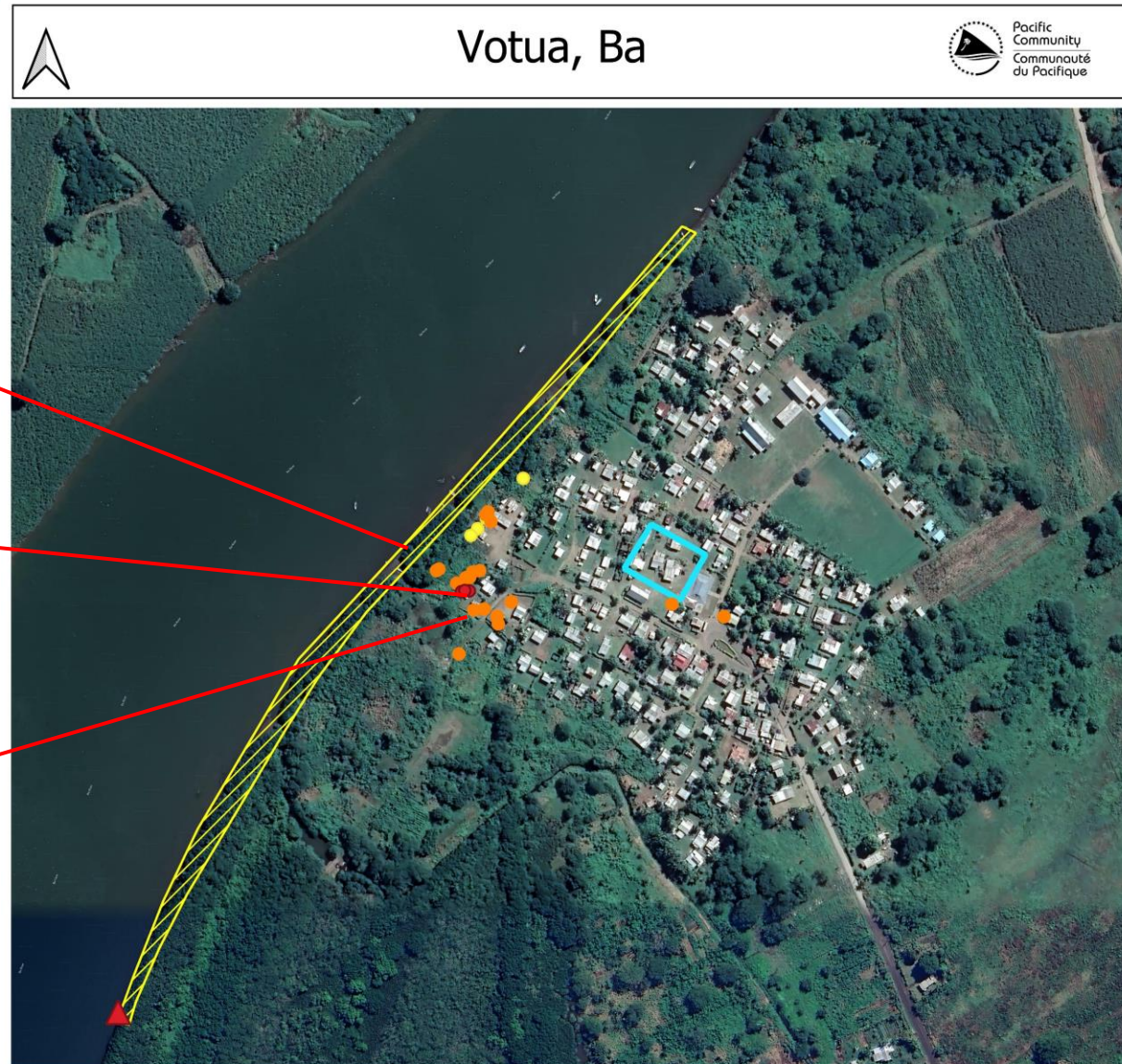
Please specify

\_\_\_\_\_

Point and shoot! Use the camera to take a photo of the plant/area

Click here to upload file. (< 5MB)

# Maps – Votua, Ba



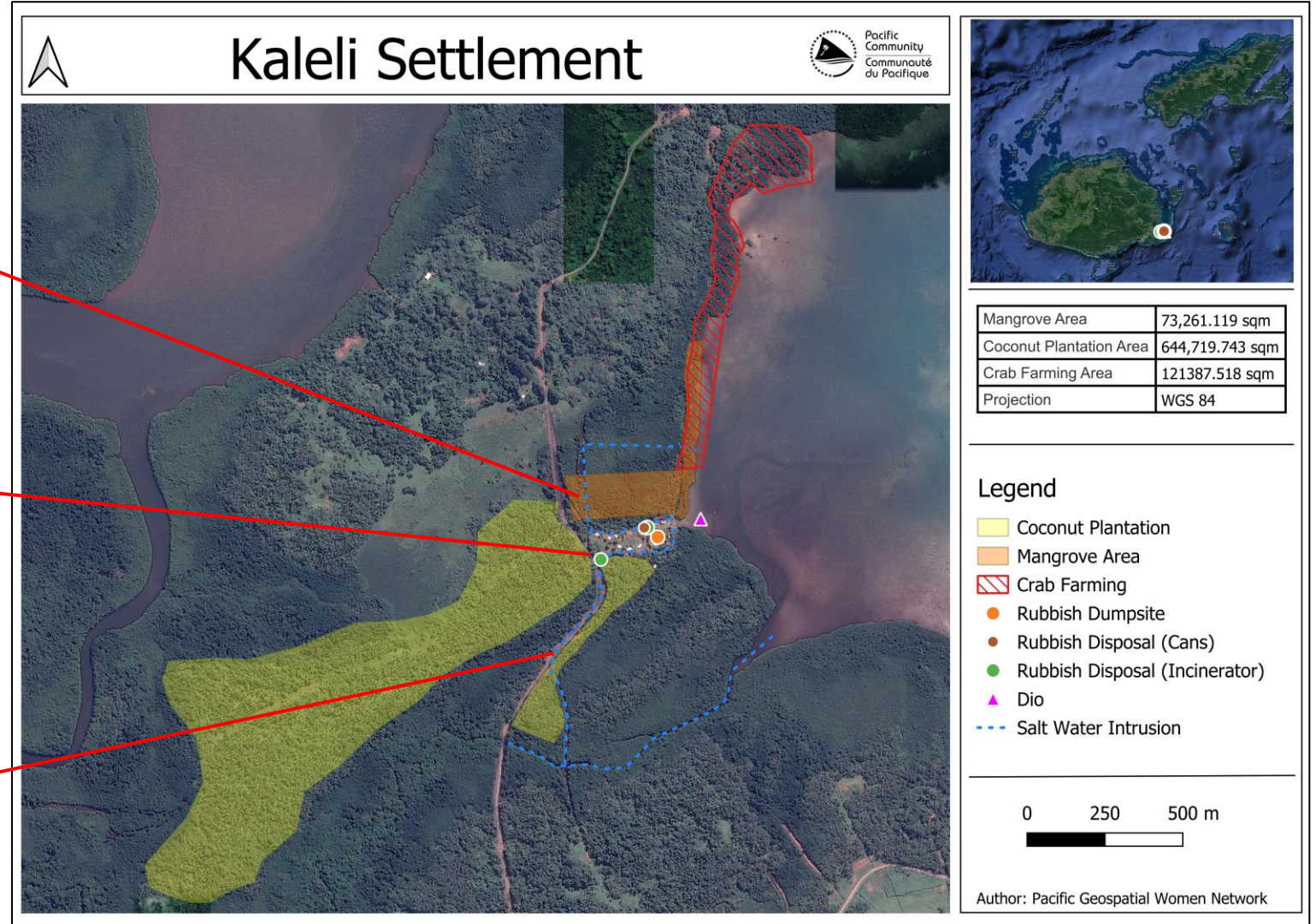
Mangrove Area	13000 sqm
Chilli Planting Area	2000 sqm
Projection	WGS 84

### Legend

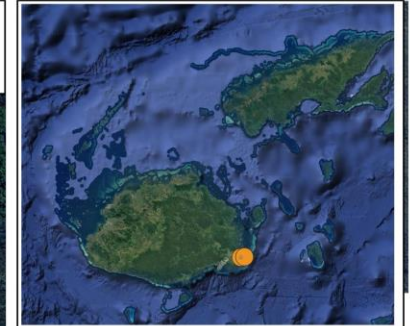
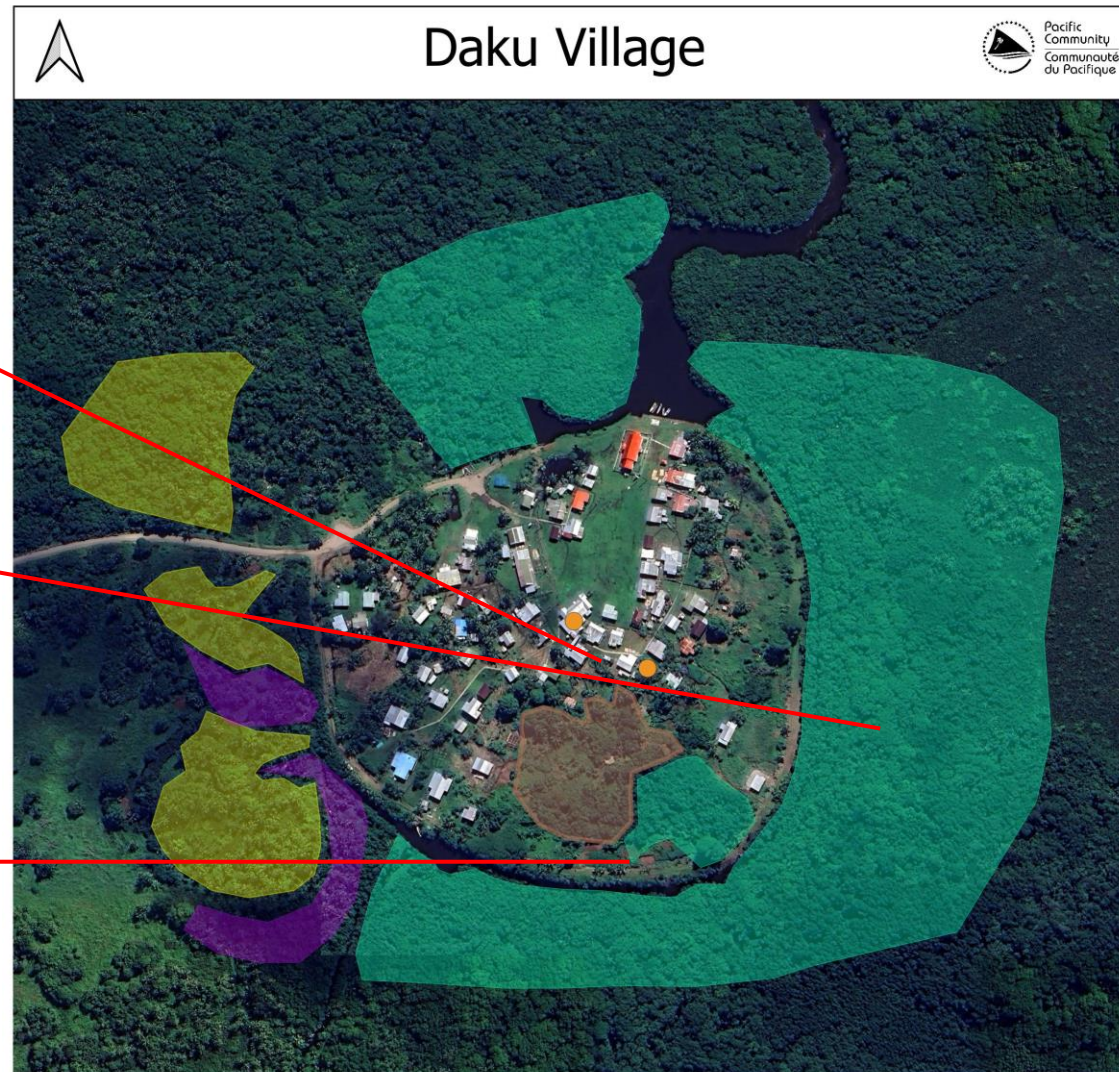
- Chillies
- Coconut Tree
- COCOA Plant
- Chillies Planting Area
- ▲ Mangrove Nursery
- Mangrove Area



# Maps –Kaleli, Tailevu



# Maps –Daku, Tailevu

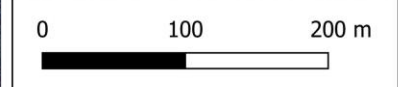


Mangrove Area	0.101508943 SqKM
Coconut Area	0.1155 SqKM
Pandanus Area	0.008 SqKM
Vau	0.009 SqKM
Projection	WGS 84

Author: Pacific Geospatial Women Network

**Legend**

- Vau
- Mangroves
- Pandanus
- Coconut Trees
- Rubbish Disposal



# Summary of Activities



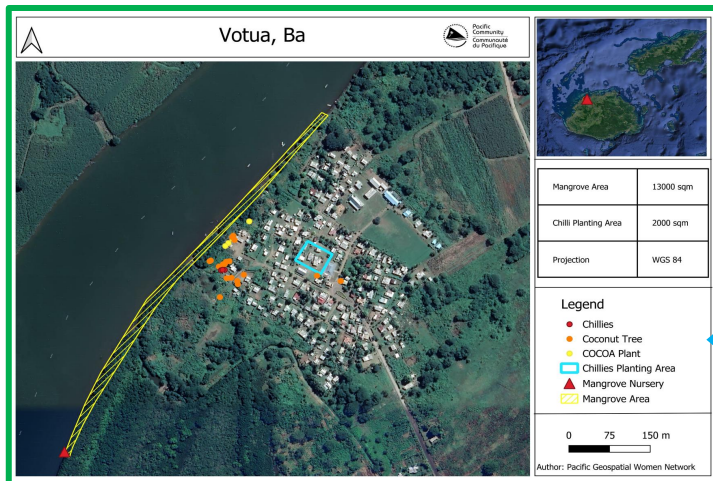
1. Participatory Mapping



2. Mapping Areas of Interest



3. Installation of Kobo Toolbox



6. Result - Map of Resources



5. Feedback - Kobo Toolbox

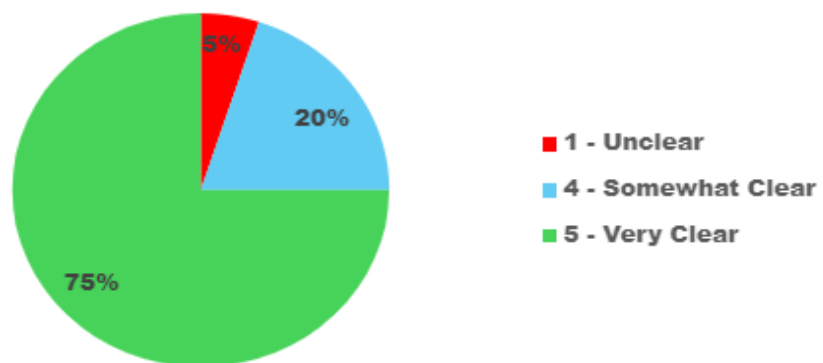


4. Field Work Using Kobo Toolbox

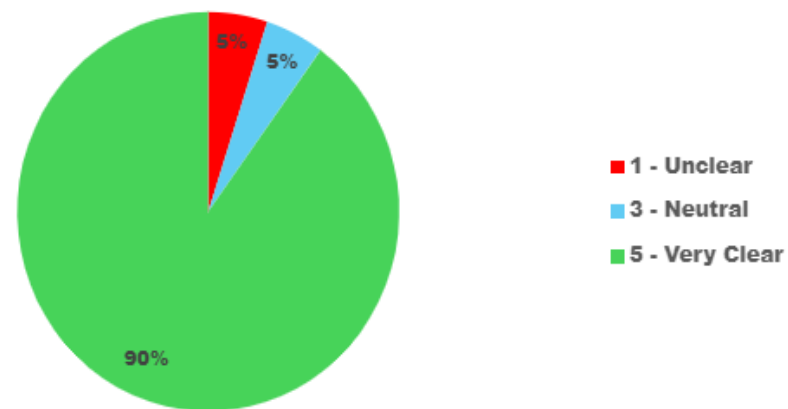


# Evaluation Feedbacks - Votua

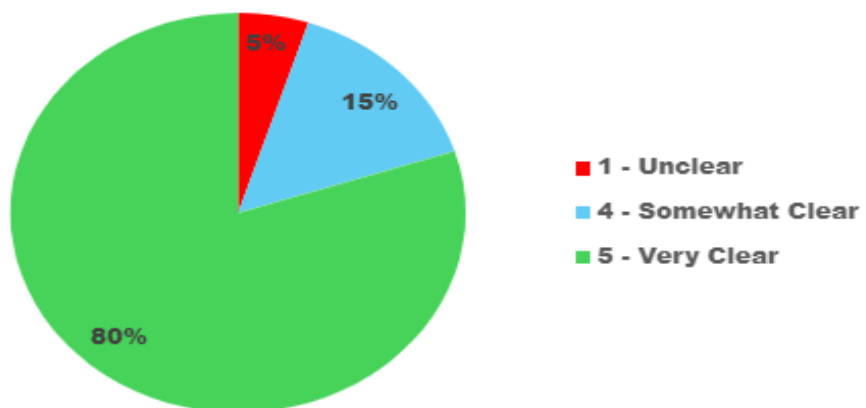
**1. Clear and easy to understand the training**



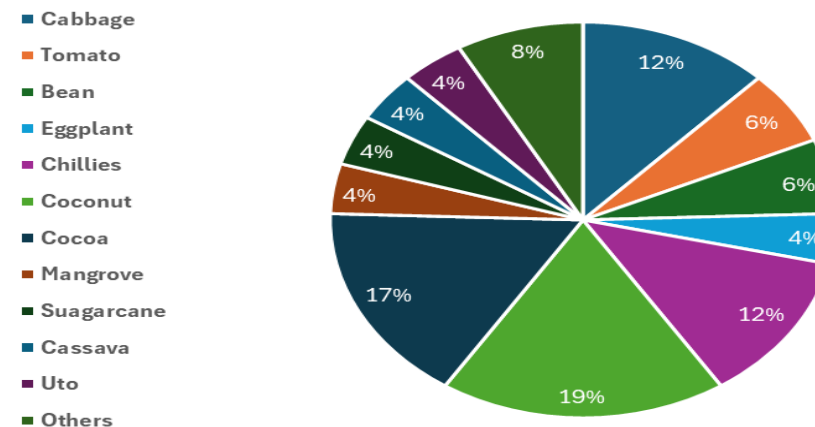
**2. Easy to use Kobo Toolbox**



**3. Knowledge after the training**

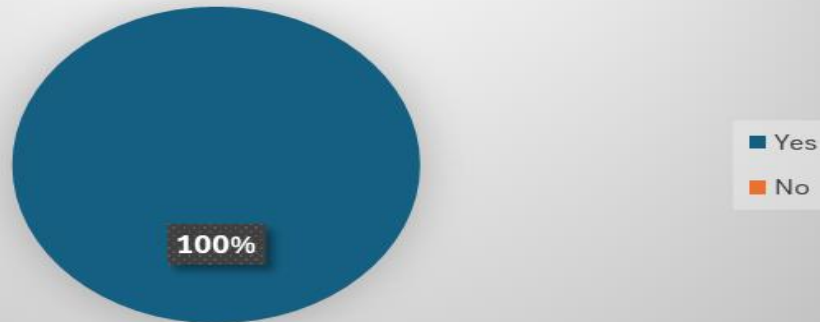


**Suggested crops the participants wish to collect data on**

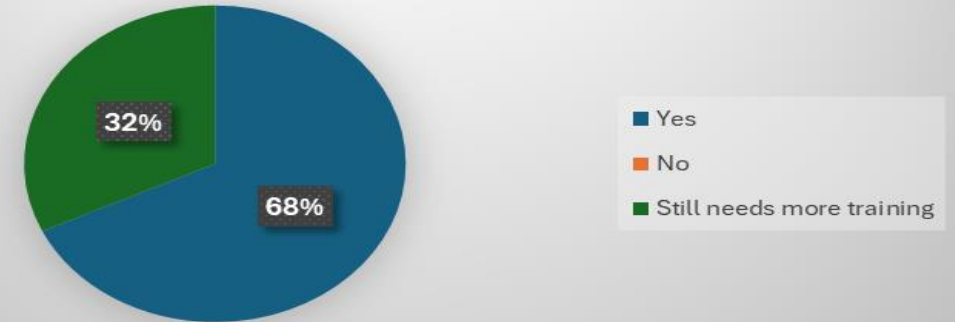


# Evaluation Feedbacks – Daku

**Facilitators clear in presenting geospatial tools and methods during training**



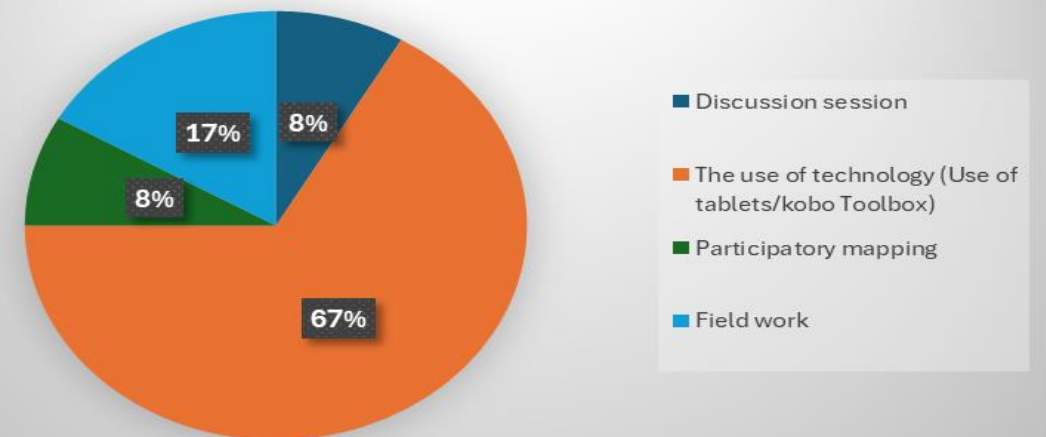
**Kobo Toolbox training sufficiently prepared participants for data collection**



**Workshop successfully raised awareness about geospatial tools among participants**



**Valuable aspects of the training**



# Way forward

## FUNDING

### WOMEN EMPOWERMENT

Capturing,  
storing and  
better  
managing of  
their data in  
terms of  
sustainability.

### DATA MANAGEMENT/OWNERSHIP

Blueprint for  
government  
ministries and  
to inform other  
projects within  
SPC.

### TRADITIONAL KNOWLEDGE

Resource  
Mapping

# Monitoring, Evaluation & Learning (MEL)



Pacific  
Community  
Communauté  
du Pacifique



MEL will be measuring the performance of the project based on the project indicators.



We have a theory of change (ToC) as a guiding framework for the project intervention.



We will be conducting the baseline study at the end of the project & evaluation.



All donor reporting requirements will be produced.

# Vinaka vakalevu

