

# Wildfire Solution From Space

OroraTech

November 2023

Richard Russell – Drone Services Fiji



# Meet OroraTech



**2018**

Founded  
in Munich

**90+**

Employees on

**3**

continents

**20+**

Nationalities

**30%**

Female

**300**

Users in

**20**

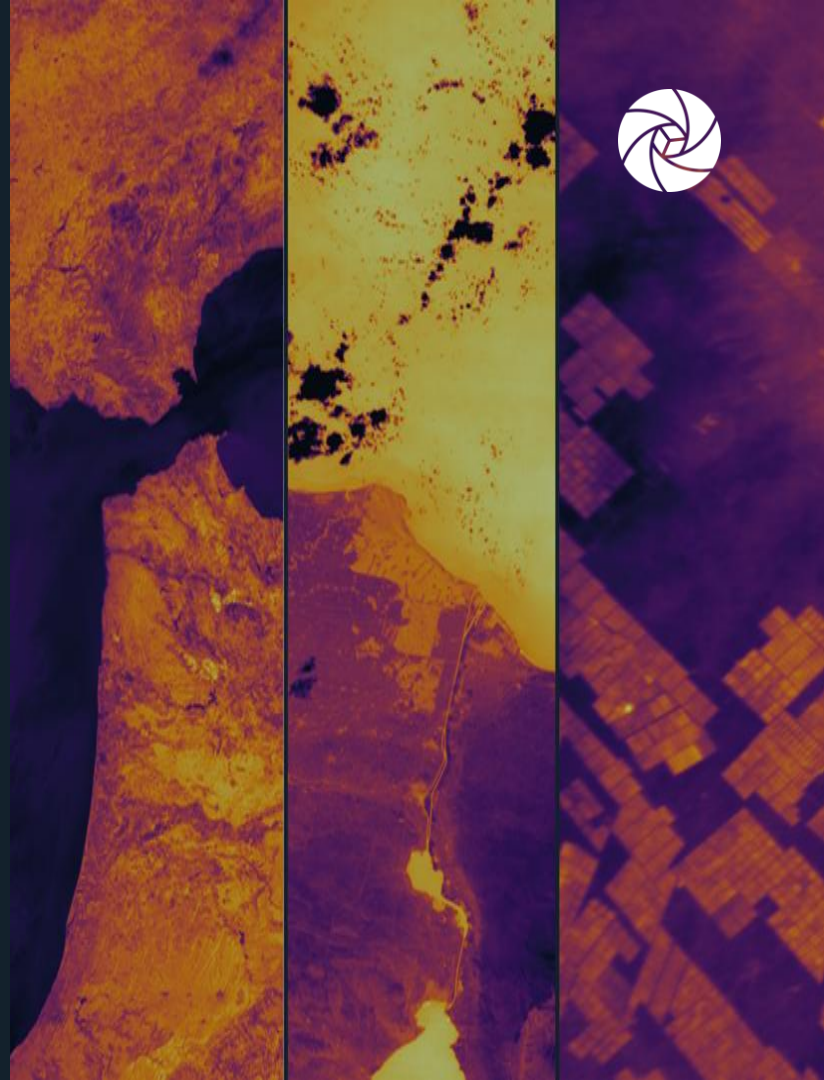
countries

**25+**

satellites  
available

**2**

Satellites  
in orbit

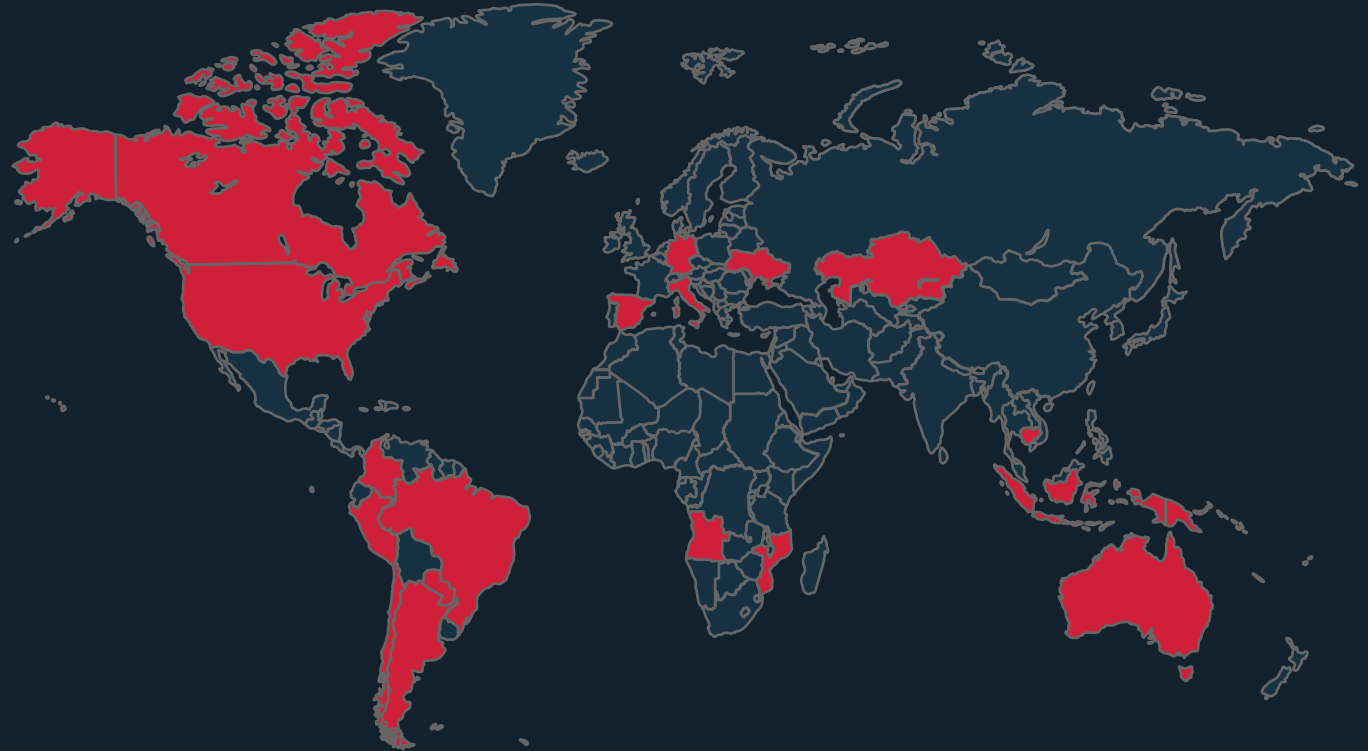


# Active On All Continents



**300m ha**  
Total area  
monitored

**>160m ha**  
Forests  
protected



# OroraTech's Wildfire Solution Products



Before



- Fire Danger
- Weather & Vegetation

During



- Instant Alert
- Fire Location & Intensity
- Affected Area



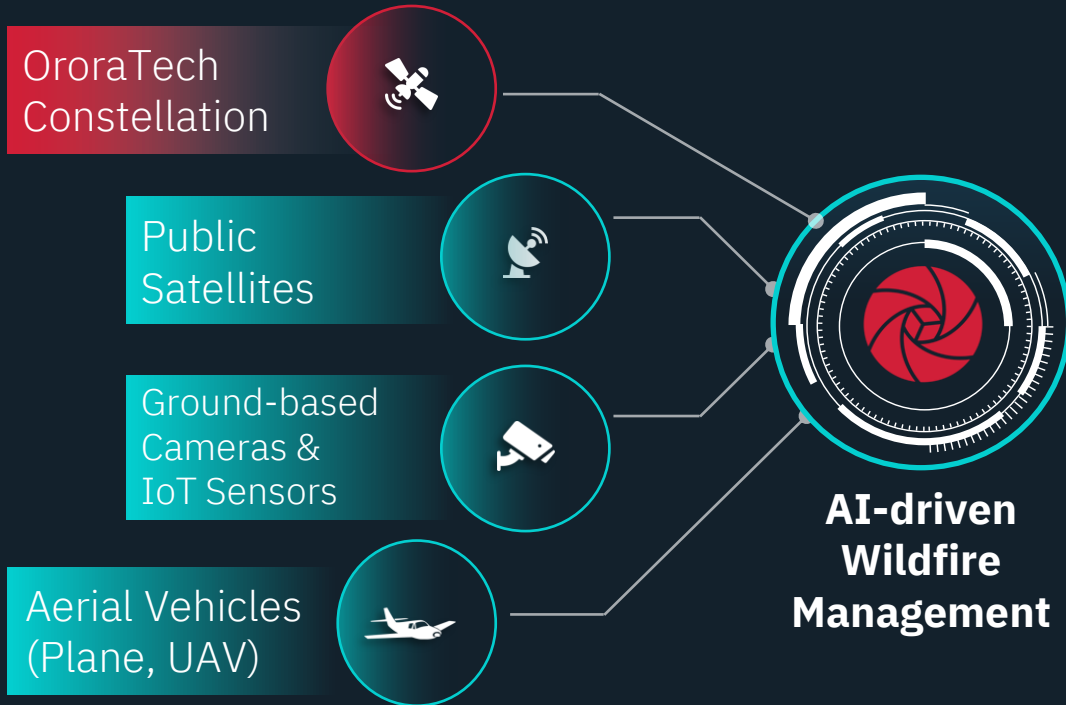
- Fire Progression Monitoring
- Fire Spread Prediction

After

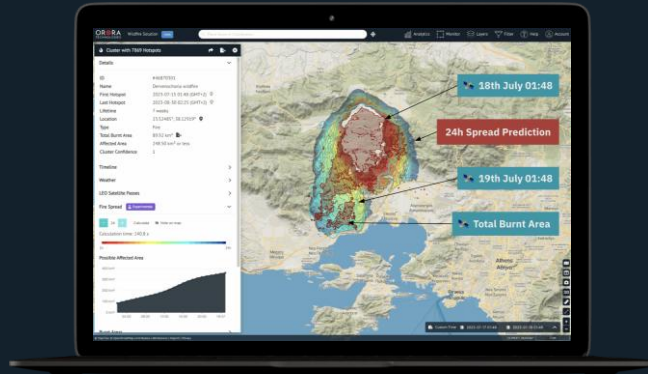


- Burnt Area & Severity
- Long-term fire statistics

# We Turn Raw Data Into Actionable Insights



# All-in-one AI-driven Wildfire Management



## MAINTAIN OVERVIEW AND CONTROL

Predict fire growth, severity &  
assess risk and losses



## SEE WHEN OTHERS ARE BLIND

Detect fires through smoke,  
in remote areas, 24/7



## ACT DECISIVELY

Accurate resource dispatch  
for optimum suppression

# Robust Infrastructure For Global Monitoring



2022

2023

2024

Until 2027

**FOREST-1**

**FOREST-2**

**WFS Pro**

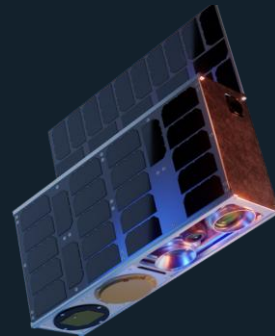
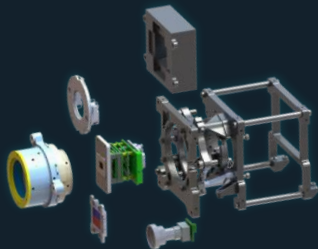
**WFS Pro**

Prototype cameras in orbit

First operational cameras

**12h** automated revisits with **up to 6 daily images**

30-minute global coverage



# Real-Time Detection



**FOREST-2 (150 m) vs. NOAA-20/VIIRS (375m)**

*Northern Territory, AUS, 17 Oct 2023*

## OroraTech Cameras:

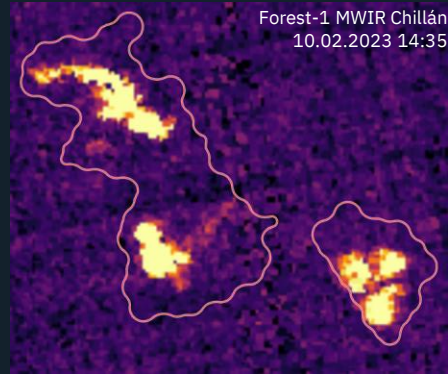
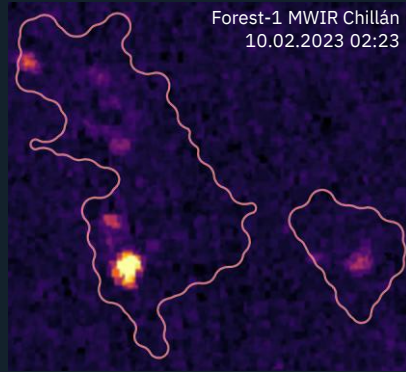
- Detect smaller fires  $>4 \times 4 \text{m}^2$
- Ultra-fast detection within minutes (18x faster)
- Sharper fire outline
- See through smoke and at night



Accurate resource dispatch  
Optimum suppression

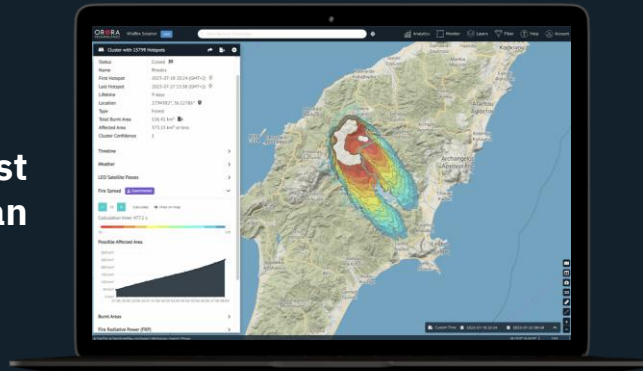


# Continuous Situational Awareness



- Triage fires with help of combined Spread Forecast and AI Fire Risk assessment
- Understand early which fires will cause largest damage

**Dynamic forecast  
until next scan**



**Be a step ahead of every fire!  
Make better choices by  
setting the right priorities.**

# Asset Monitoring And Reporting



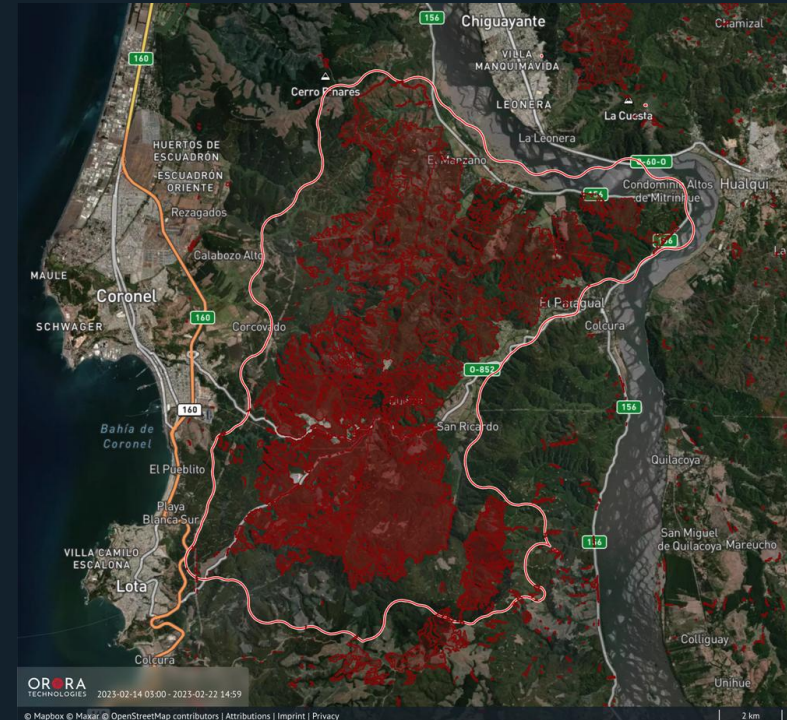
High-accuracy (<10m) estimates of losses

- **Burnt area**
- **Illegal harvesting**

Daily assessment of burnt area



Continuous and automated assessment of losses even during high intensity days



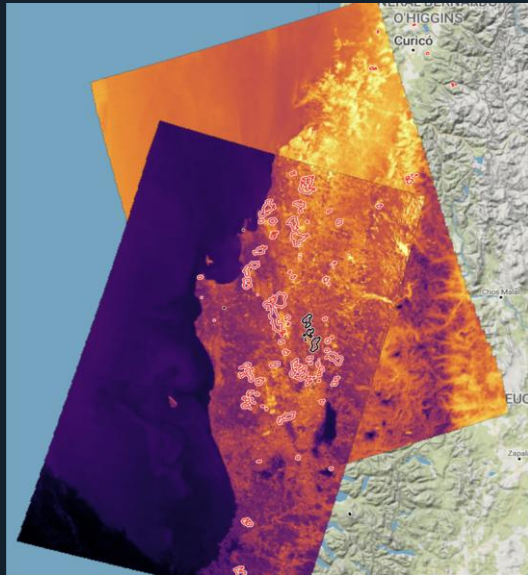
# WFS Is Available For All Your Devices And Control Rooms



- Access Detailed Wildfire Information With All Your Devices
- Personalized monitoring area and notifications
- Use Our API to Integrate Our Data Into Your Existing Control Rooms & Platforms

# Used in Emergency Response

Chile, February 2023



**Proprietary Live Data**



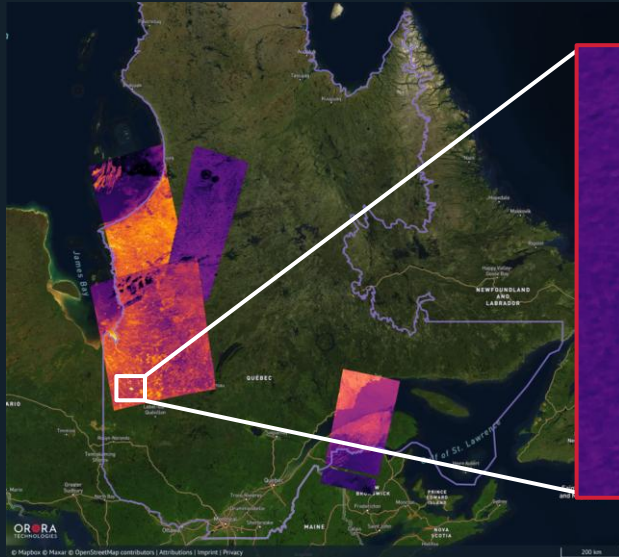
**Clusters overlaid  
with visual images**



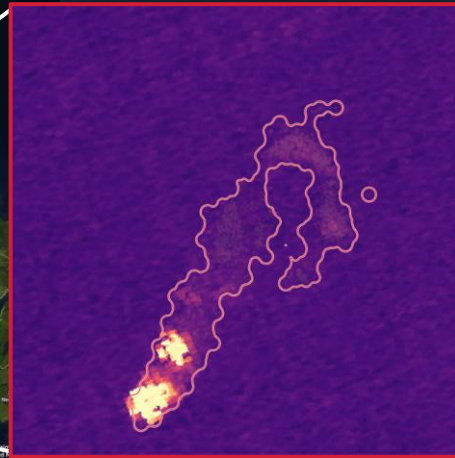
**Daily Burnt Area  
assessment**

# Used in Emergency Response

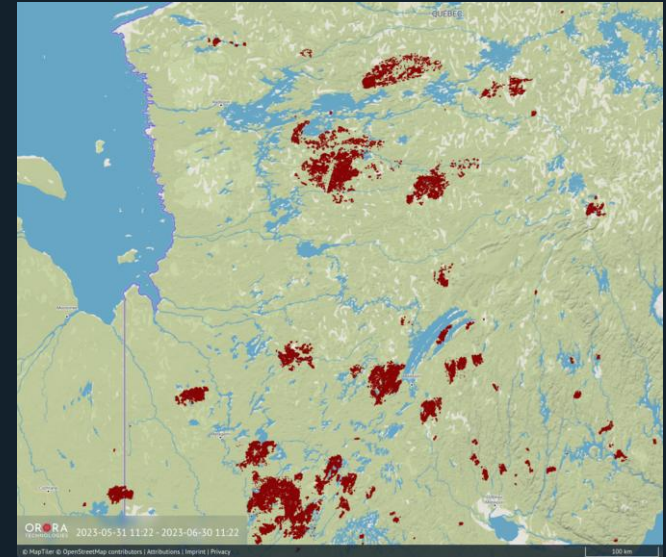
Quebec, June 2023



**Proprietary Live Data**



**Clusters Overlaid  
For Situational  
Awareness**



**Daily Burnt Area  
Assessment**

# Our Customers Write Success Stories



**MATHIEU  
PAYETTE**

**SOPFEU**  
Quebec, Canada



“We map fires from space **when other methods are not possible**. OroraTech’s WFS is an operational mindshift.

We never had success with the satellite based data before. In 2023, OroraTech became **the main information source** for fire detection and monitoring to maintain situational awareness.”

**MIKE  
SUTTON**

**Forestry Corporation**  
New South Wales,  
Australia



“Having completed a six-month evaluation, FCNSW is continuing with its use of the Wildfire Service **to assist with fire management in NSW State of forests**.

The monitoring area and notification service is **particularly useful at providing early detection information** which facilitates a quick response to potential threats.”

# Act now!

## Questions?

**Richard Russell**

**Orora Tech Partner**

**Fiji and the Pacific**

[richard@droneservices.com.fj](mailto:richard@droneservices.com.fj)

**Mark Harrington**

**Orora Tech**

**APAC Region Sales Manager**

[mark.harrington@ororatech.com](mailto:mark.harrington@ororatech.com)

**ORORA**  
TECHNOLOGIES