

# Pacific GeoPortal

A regional community geospatial platform

Simon Hill

SHill@esri.com

2023 PGRSC User Conference

Suva, Fiji



# Global Reach, Local Presence



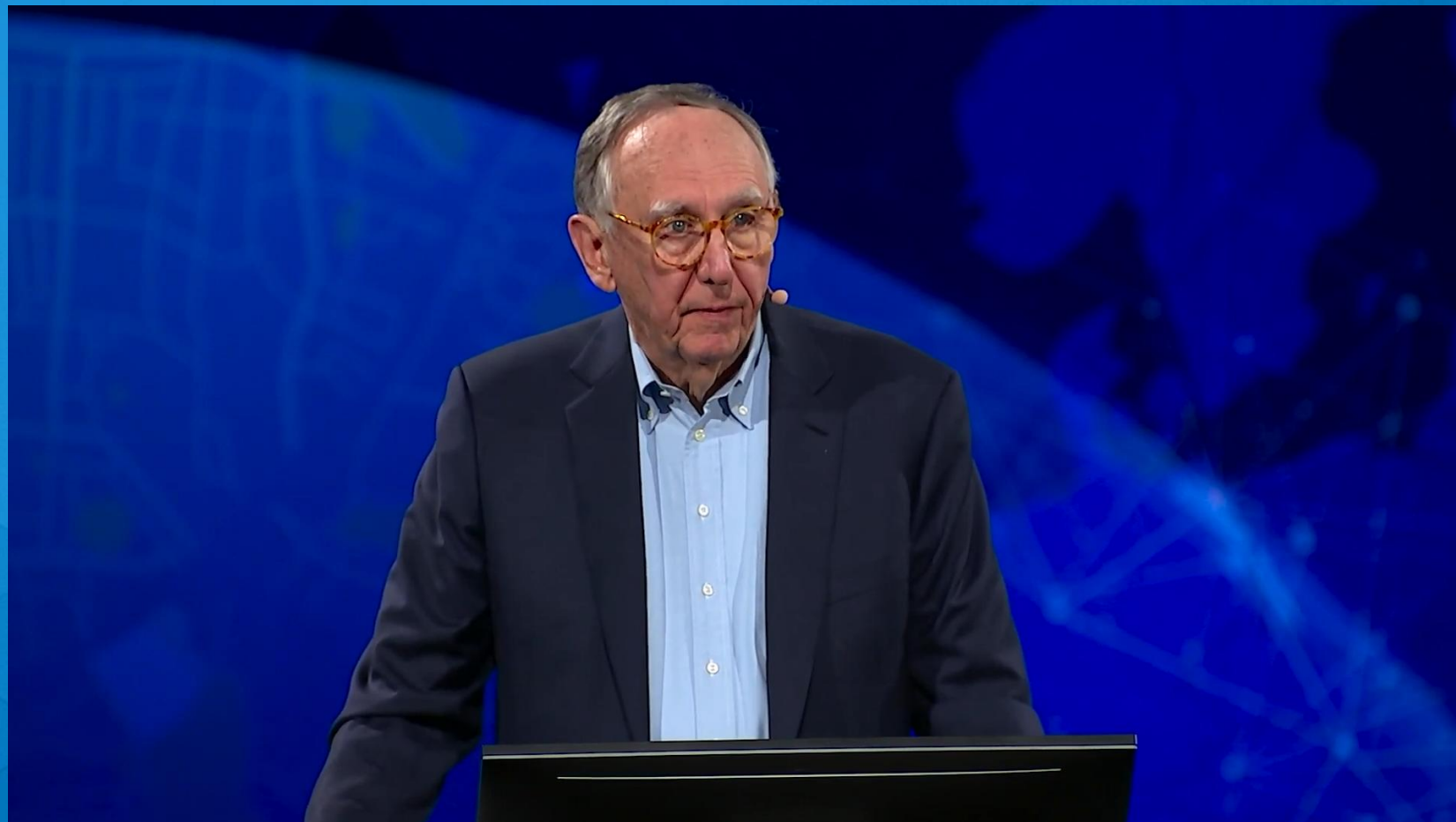
- Founded in 1969 by Jack and Laura Dangermond
- Still privately held, debt free and committed to sustainable growth
- Diverse global user base of over 300000 organisations using ArcGIS
- More than 5000 employees from 73 countries
- 49 offices worldwide, including 11 R&D Centres
- Invests 30% of annual revenue into R&D
- Comprehensive network of International Distributors and Business Partners
- Committed to working with global and regional bodies



# Our World is Challenged

Esri Founder and President

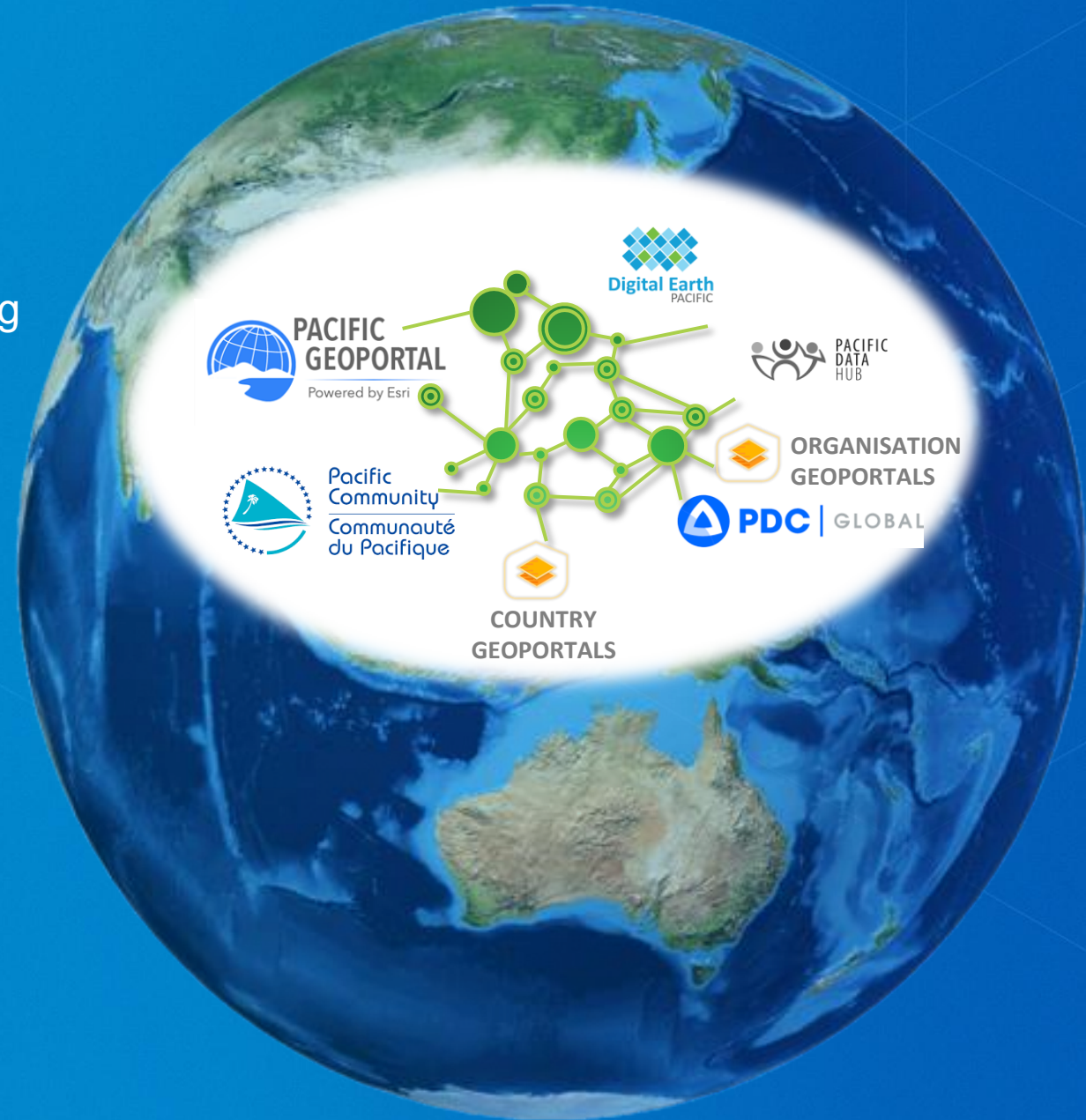
Jack Dangermond



# Esri in the Pacific

Esri is pledging support to the GIS and Remote Sensing community in the Pacific region by standing up a community GIS platform, Pacific GeoPortal, which will showcase existing and new open data, alongside freely accessible geospatial tools and capacity development materials.

Esri is excited to help increase discoverability and adoption of the invaluable data created by Digital Earth Pacific, the Pacific Data Hub and other open sources, integrating it into new and existing geospatial systems across the region



# The Pacific GeoPortal

The vision is to provide a 'one stop shop' portal for geographic content and comprehensive web GIS tools, free for single users residing, supporting efforts, or working in the Pacific

This will remove the barriers to entry to geospatial technology, data and learning for users working in or on the Pacific

It will enable a sustainable portal of portals for existing and new geospatial data focused on the Pacific

[www.pacificgeoportal.com](http://www.pacificgeoportal.com)



**PACIFIC  
GEOPORTAL**

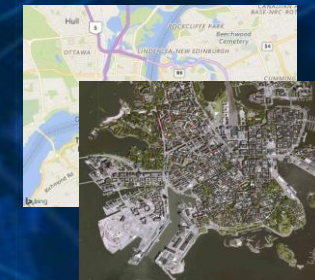
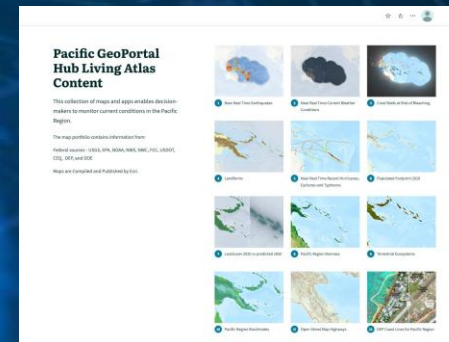
Powered by Esri

# The Pacific GeoPortal

Content available includes

Esri Living Atlas

Commercial Data

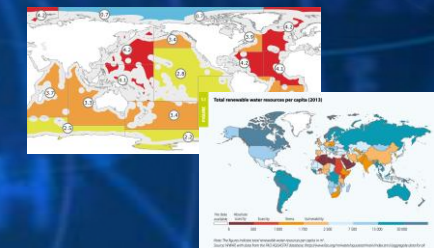
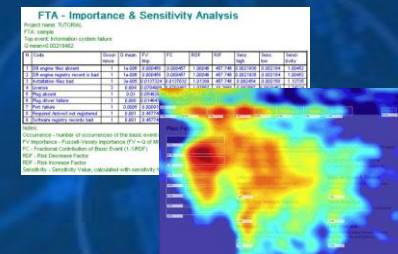


## Tools and Content

The Pacific GeoPortal provides full access to ArcGIS Online, enabling single users to access tools for mapping, analytics, sharing and collaboration, and a suite of templates and field applications

Open Data Sources

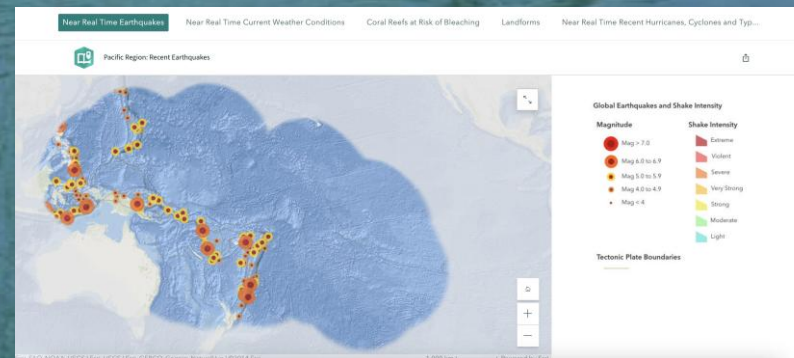
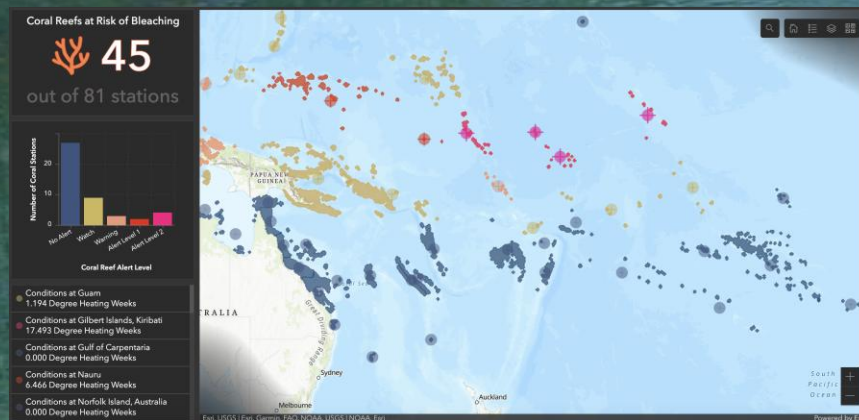
Community Data (Govts, NGOs, Aid Orgs)



# The Pacific GeoPortal

## Executive Focused Decision Support Apps

- Powerful decision ready apps
- Configured for an executive audience, powered by regional professionals
- Leveraging authoritative data



### Coastal Line Change Impacts Buildings

Tuvalu

April 26, 2023

*The combination of intensifying cyclone events and ongoing and accelerating sea level rise is expected to have direct impacts on Tuvalu.*

In the southern part of the image, the coastline moved out towards the lagoon, with initial changes visible in the 2014 coastline, and the full, stable change visible in the 2017 coastline in northern part of image, the coastline has moved out towards the lagoon between 2021 and 2022.

#### Coastal Line Change 2014

From the imagery below you can zoom in and see how coastal lines has changed between 2014 (Left Map) and 2023 (Right Map)

Tuvalu, Funafuti: Left Map 2014 - Right Map 2023

Red Line Alignment DEP 2014 Coastal Line

**How many buildings impacted by this change?**

1023 buildings were impacted by the coastal line change in 2014. Impacted buildings calculated by looking at a 30m distance to a change of coast line.

#### Coastal Line Change 2017

From the imagery below you can zoom in and see how coastal lines has changed between 2017 (Left Map) and 2023 (Right Map)

# The Pacific GeoPortal

## Sustainable

Esri will:

- Keep the platform running as long as it is needed and used
- Support project data so it continues to be accessible
- Be a portal of portals, referencing or hosting geospatial data regardless of source
- Promote the Pacific GeoPortal and gain contributions from other Esri initiatives (e.g. Land, Statistics, Health Grants)

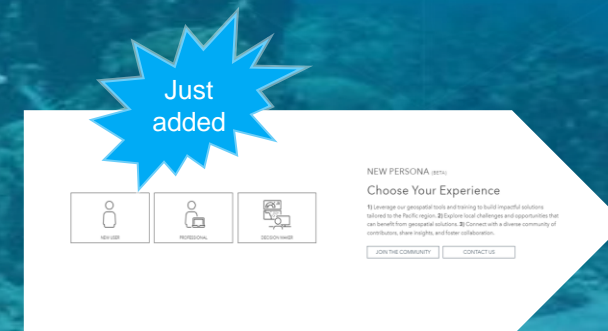
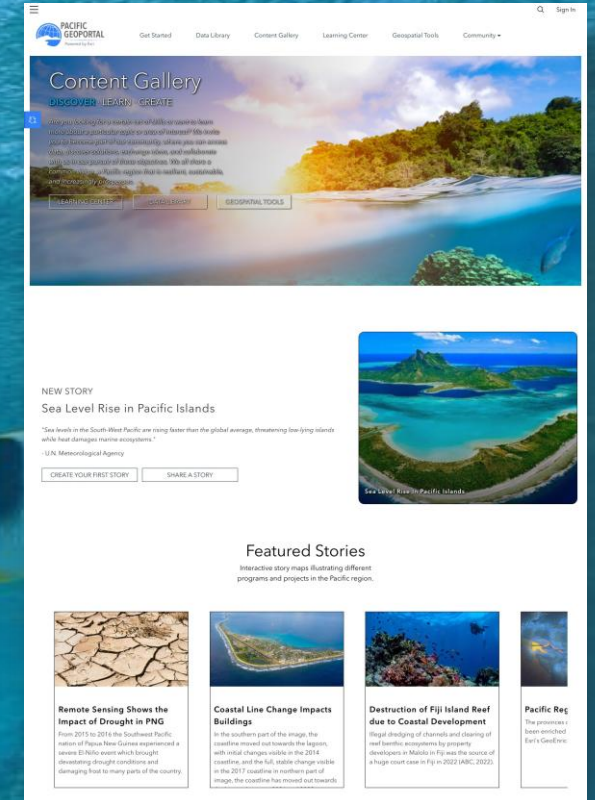
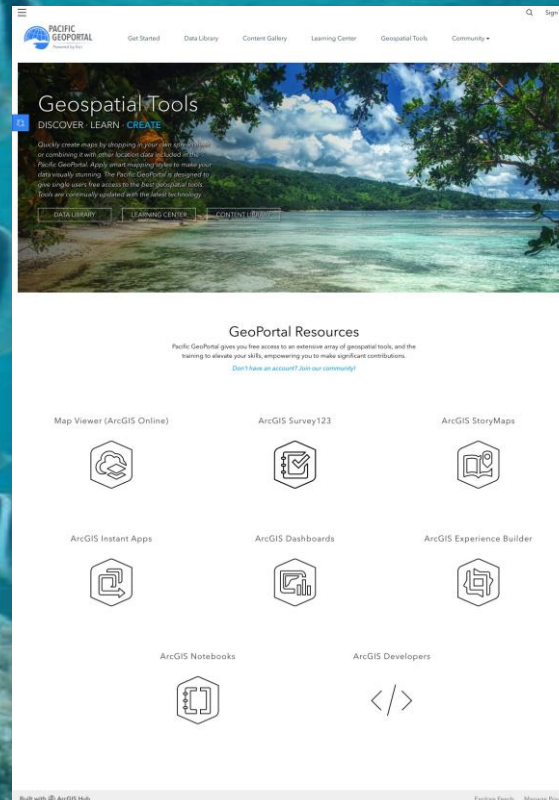
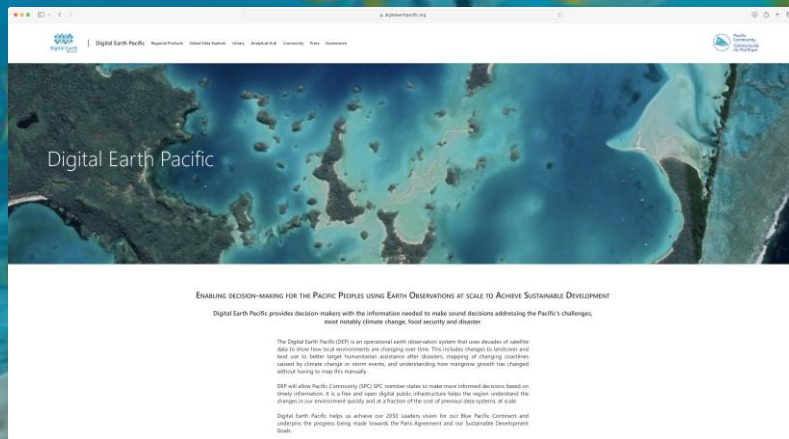




# The Pacific GeoPortal

## Sustainable Repository For Open Data

- Open data, from multiple sources, including Digital Earth Pacific
- Geospatial tools, free to use
- eLearning materials, free to access



# The Pacific GeoPortal

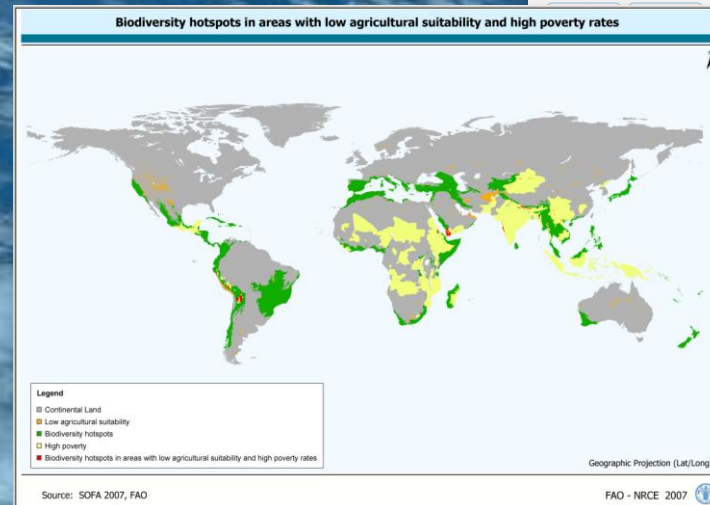
## Organisations

Organisations will share/consume the Pacific GeoPortal content in a way that creates a transparent environment where everybody can leverage the collaborated information.

This achieves the following benefits:

- Enables better and faster decision making
- Collects data once, uses them many times
- Stimulates innovation and growth
- Reduces the loss of know-how

Consume shared data



**UN GeoPortal** | The gateway for all Geospatial services in support of UN Field Missions and the Secretariat

DFS - DPKO | UNITED NATIONS

Peacekeeping Operations

- UNMIK
- UNMOGIP
- UNFICYP
- UNFIL
- UNTSO
- UNDOF
- MINUJUSTH
- MINURSO

Political Missions and Support Centres

- UNHQ
- UNGSC
- UNRCCA
- UNAMA
- UNJIM
- UNAMI
- UNSMIL
- UNSCOL
- UNOWA
- UNIOGBIS
- UNSO
- UNSOB
- UNMCC
- UNOCA
- UNRSC

Share organisational content

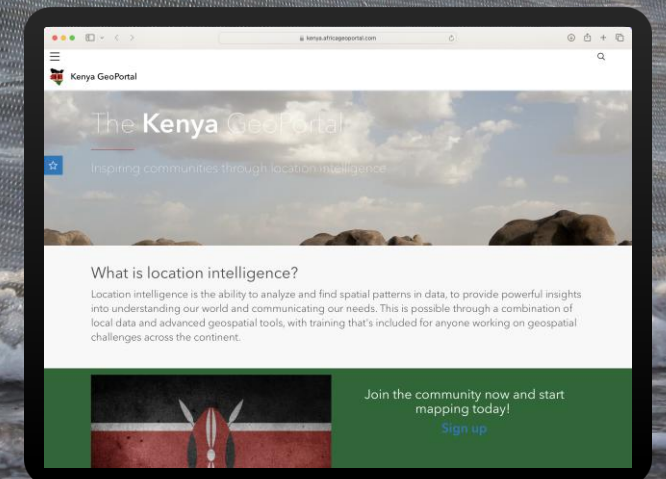
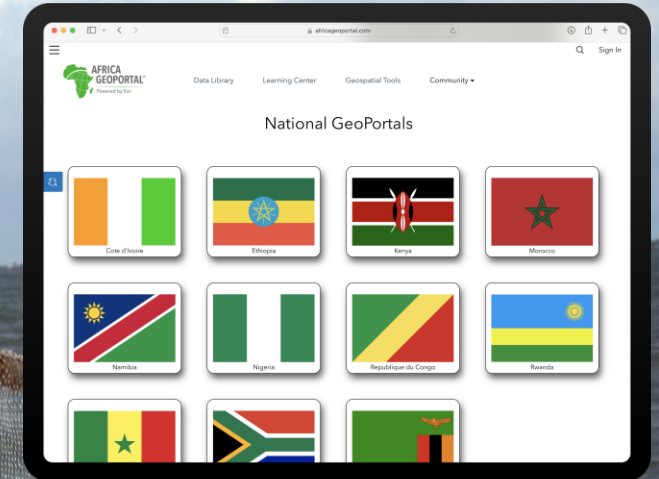
# Country or Organisation Pages

Countries or key partners can create focussed pages under The Pacific GeoPortal to promote:

- Specific data
- Stories
- User communities

Benefits include:

- Free template for easy adoption
- Ongoing core platform supported by Esri
- All content from Pacific GeoPortal



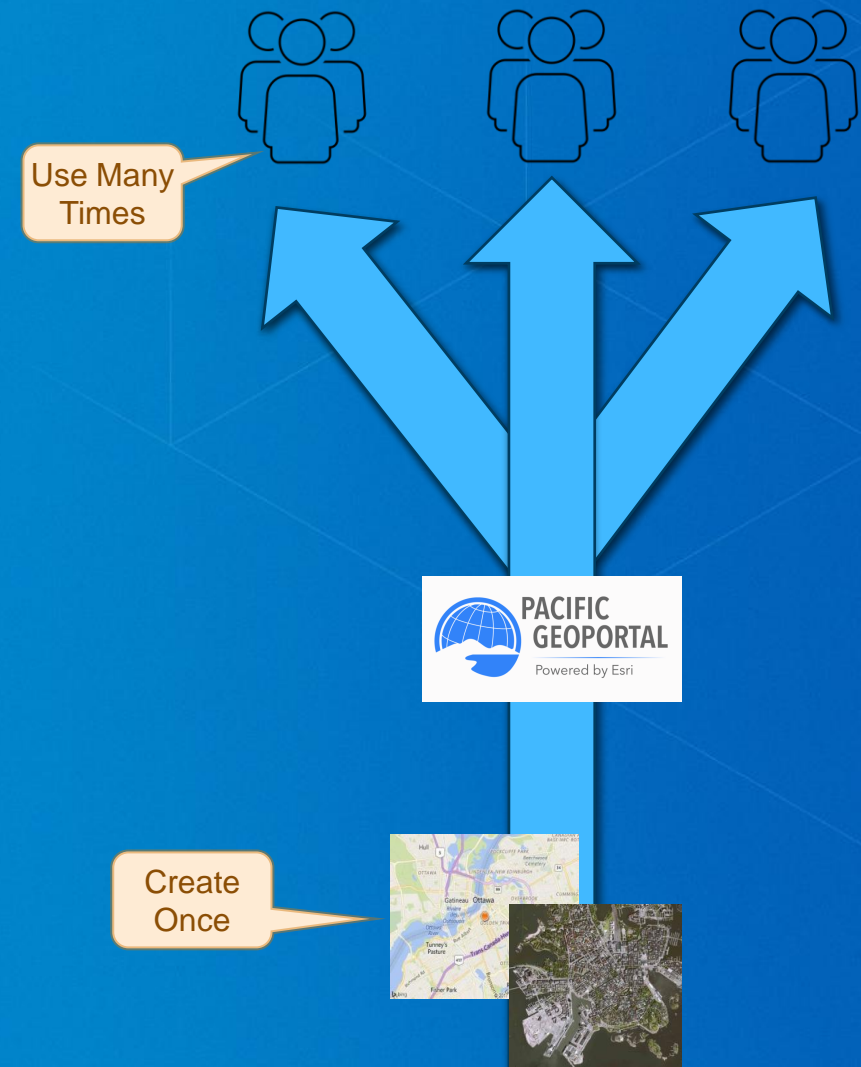
# The Pacific GeoPortal

## Transparency

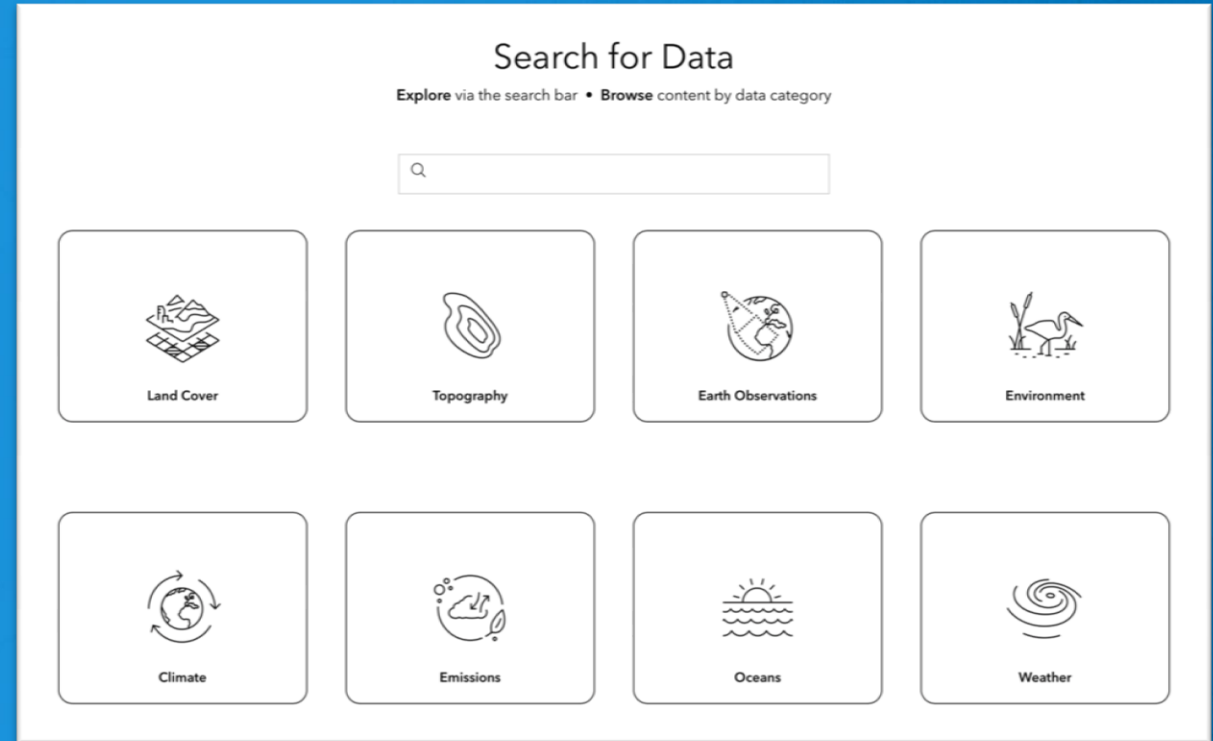
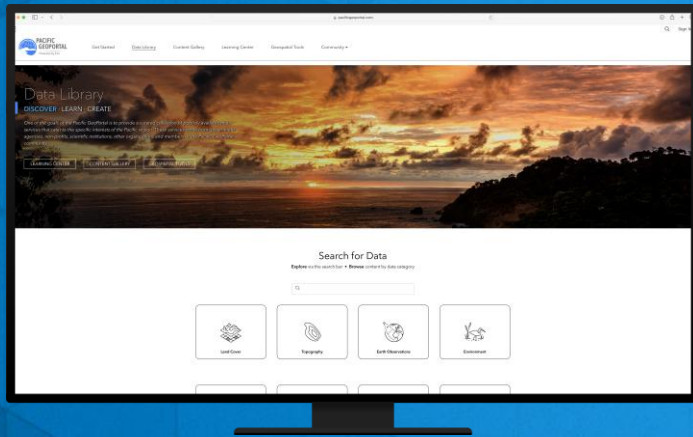
The Pacific GeoPortal will bring benefits to development partners such as:

- A common platform to track data created by projects and programs
- Increased efficiency, better use of data and better use of funds
- Data created once, used many times
- Reduced data silos

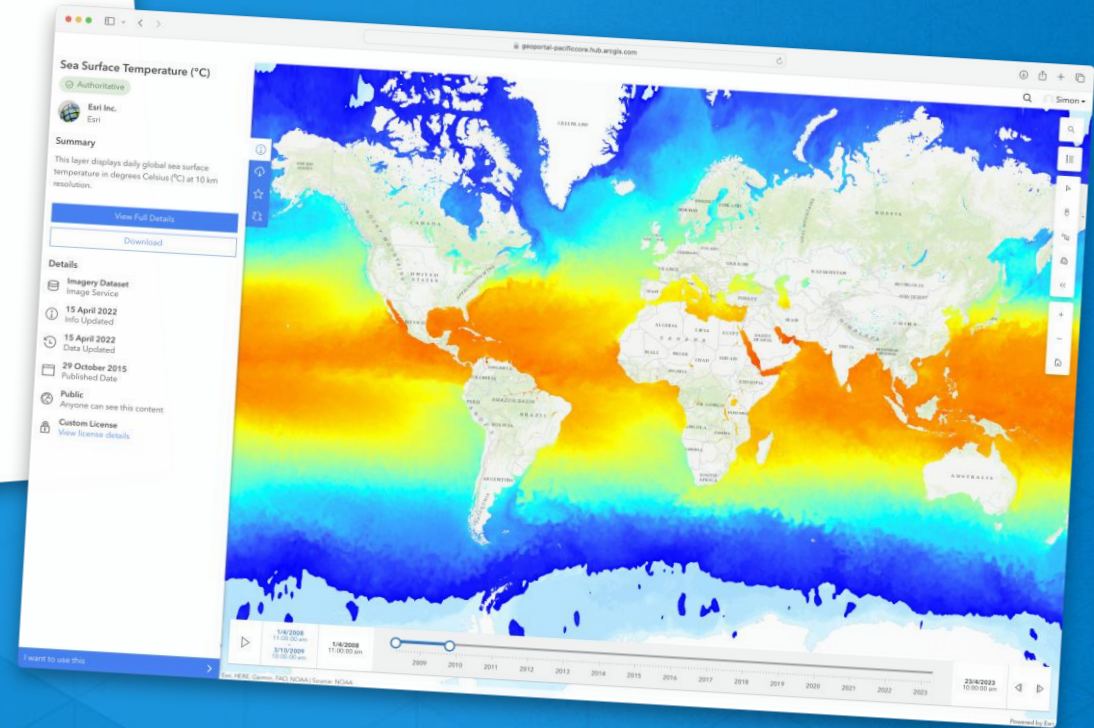
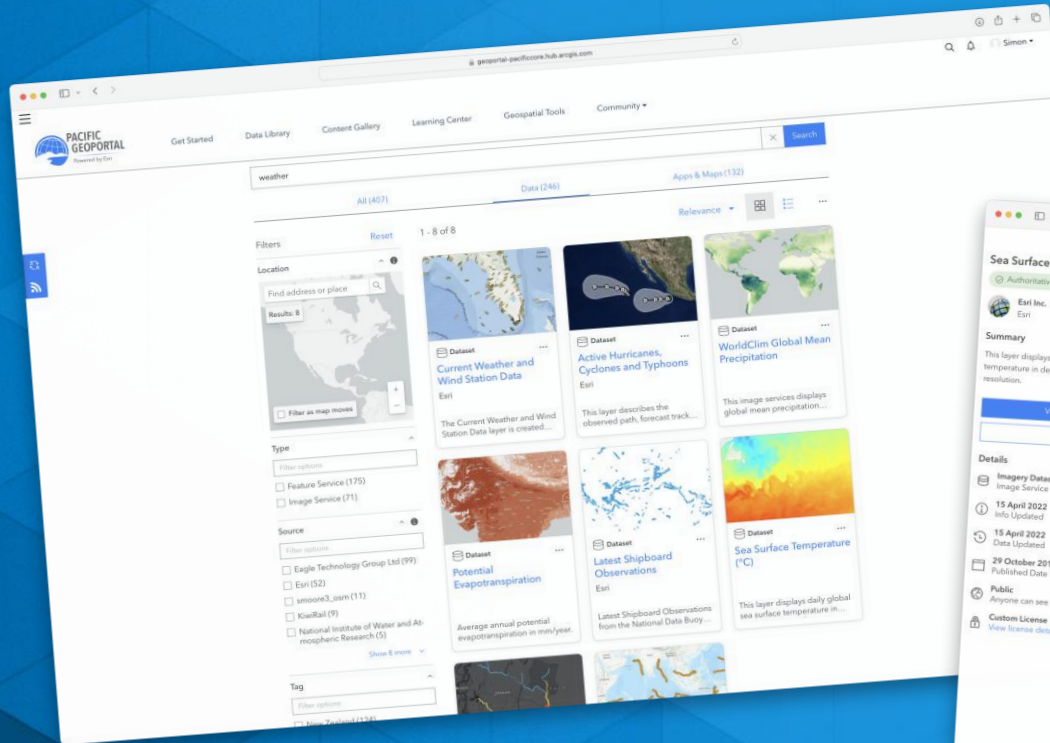
Coordinated and curated data will benefit multiple stakeholders



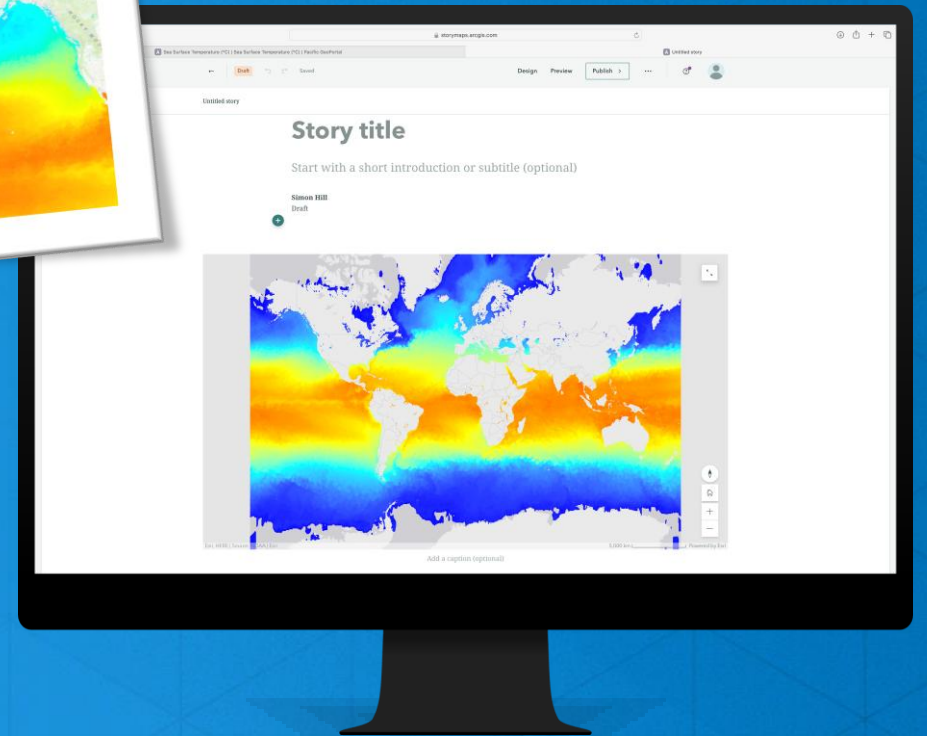
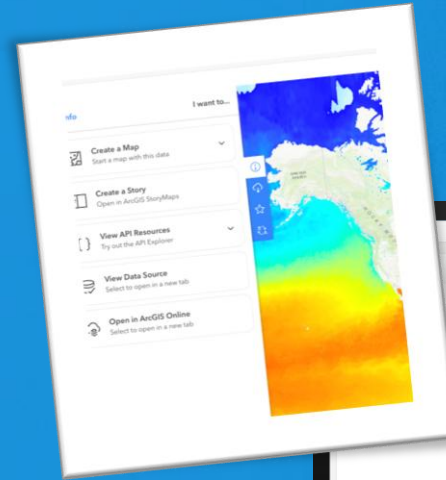
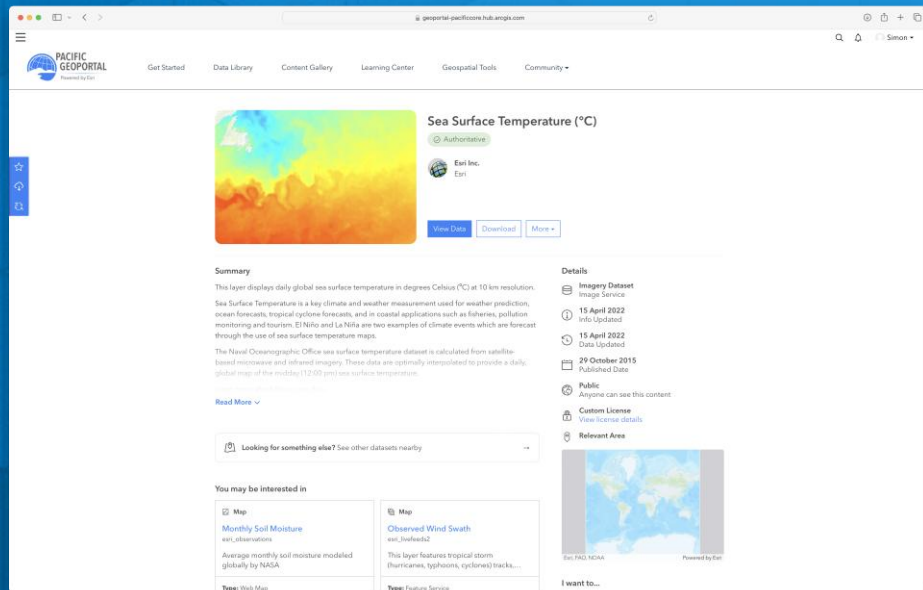
# Data Categories



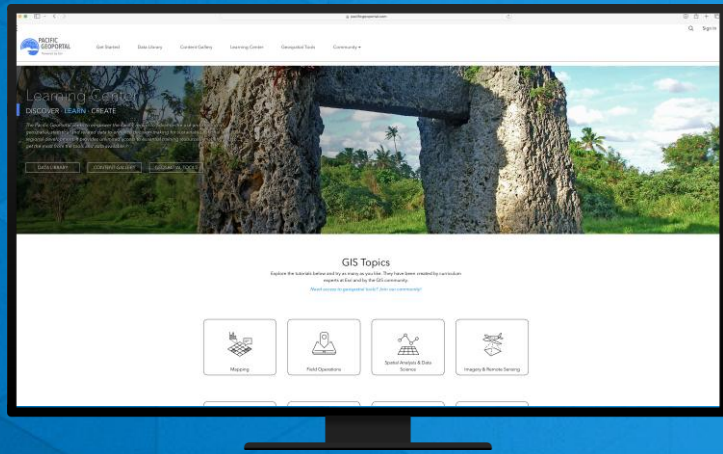
# Data discovery



# Easy To Use



# GIS Topics



## GIS Topics

Explore the tutorials below and try as many as you like. They have been created by curriculum experts at Esri and by the GIS community.

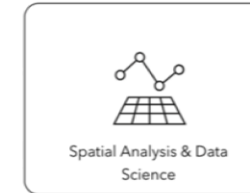
*Need access to geospatial tools? Join our community!*



Mapping



Field Operations



Spatial Analysis & Data Science



Imagery & Remote Sensing



Real-time Visualization & Analytics



3d Visualization & Analytics



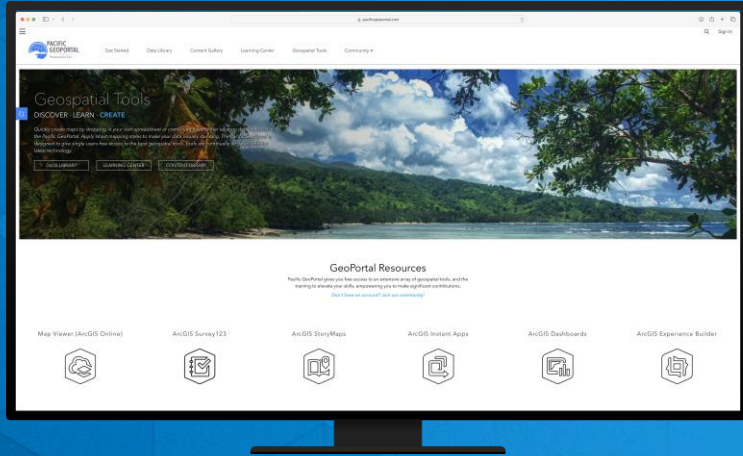
Data Management



All Capabilities



# GeoPortal Resources



## GeoPortal Resources

Pacific GeoPortal gives you free access to an extensive array of geospatial tools, and the training to elevate your skills, empowering you to make significant contributions.

*Don't have an account? [Join our community!](#)*

Map Viewer (ArcGIS Online)



ArcGIS Survey123



ArcGIS StoryMaps



ArcGIS Instant Apps



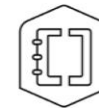
ArcGIS Dashboards



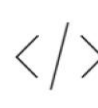
ArcGIS Experience Builder



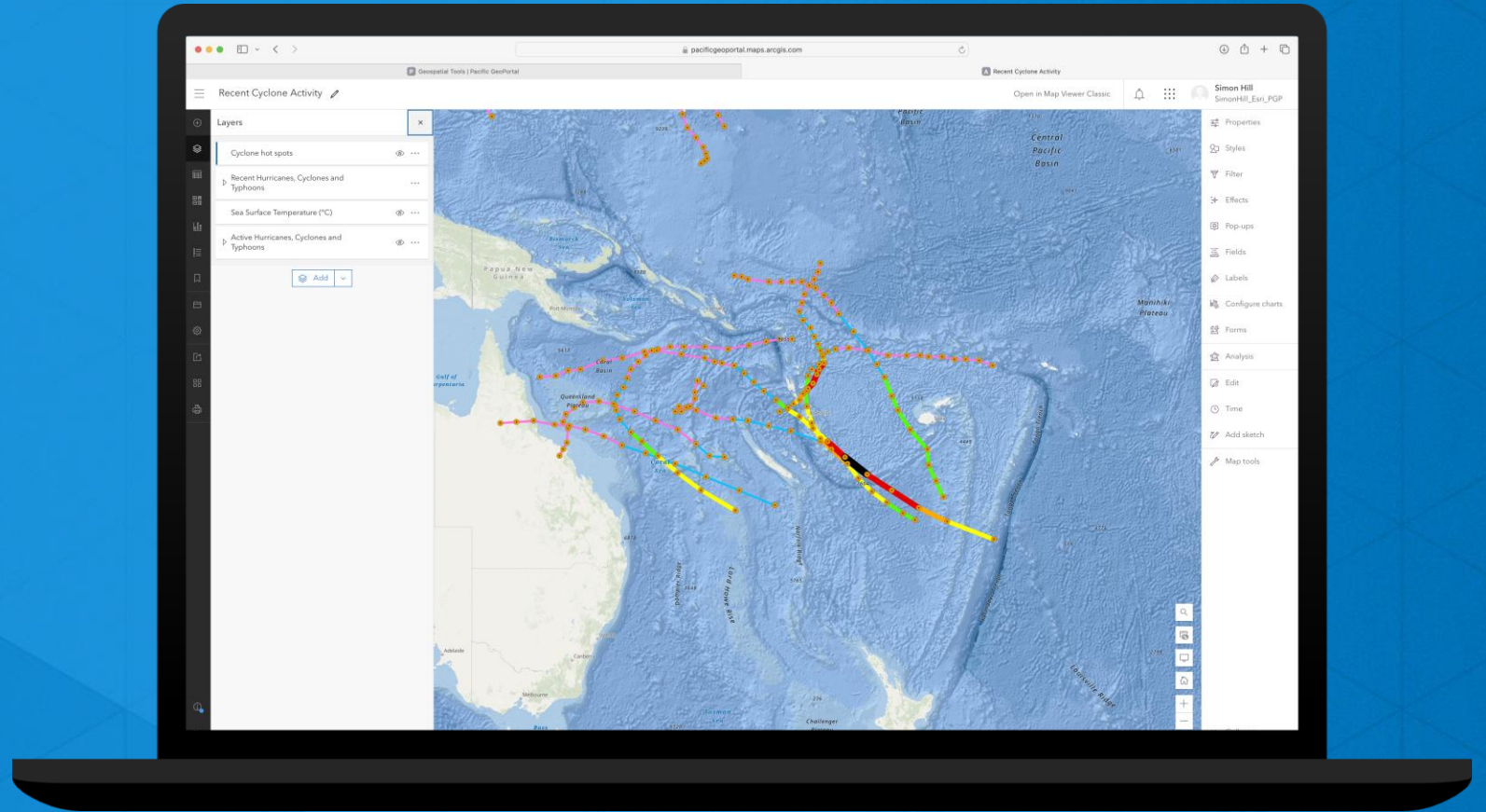
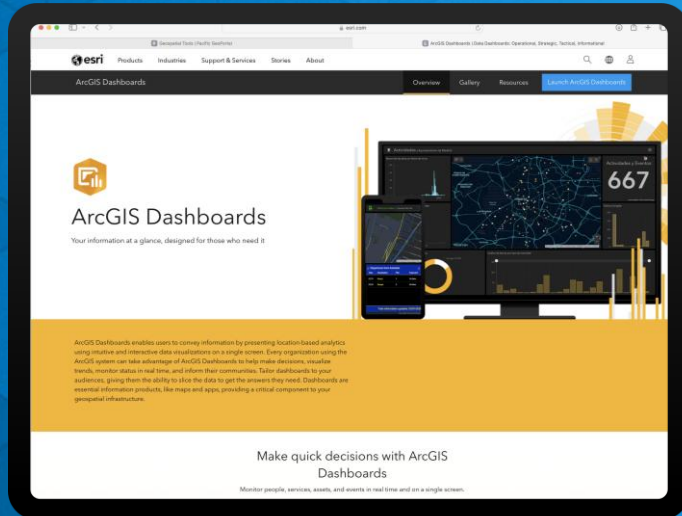
ArcGIS Notebooks



ArcGIS Developers

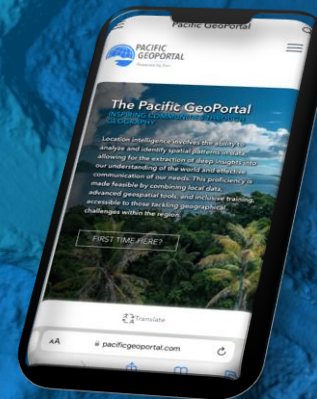
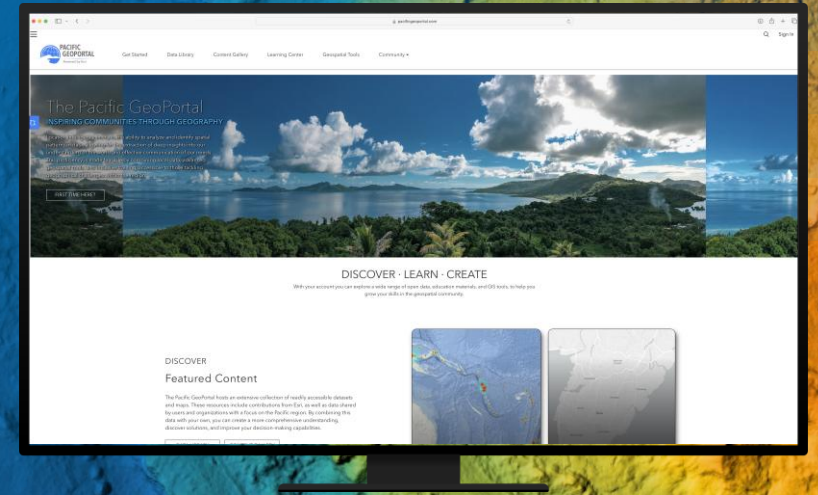


# Learning and Trying



# Next Steps

- Create a free account
- Go exploring
- Think about and feed back to us – *“how will you use the Pacific GeoPortal?”*
- What else would you like to see or be able to do?



# Links



[www.pacificgeoportal.com](http://www.pacificgeoportal.com)



**esri**

**THE  
SCIENCE  
OF  
WHERE**