

Supply Chain Vulnerability to Wildfire in Australia

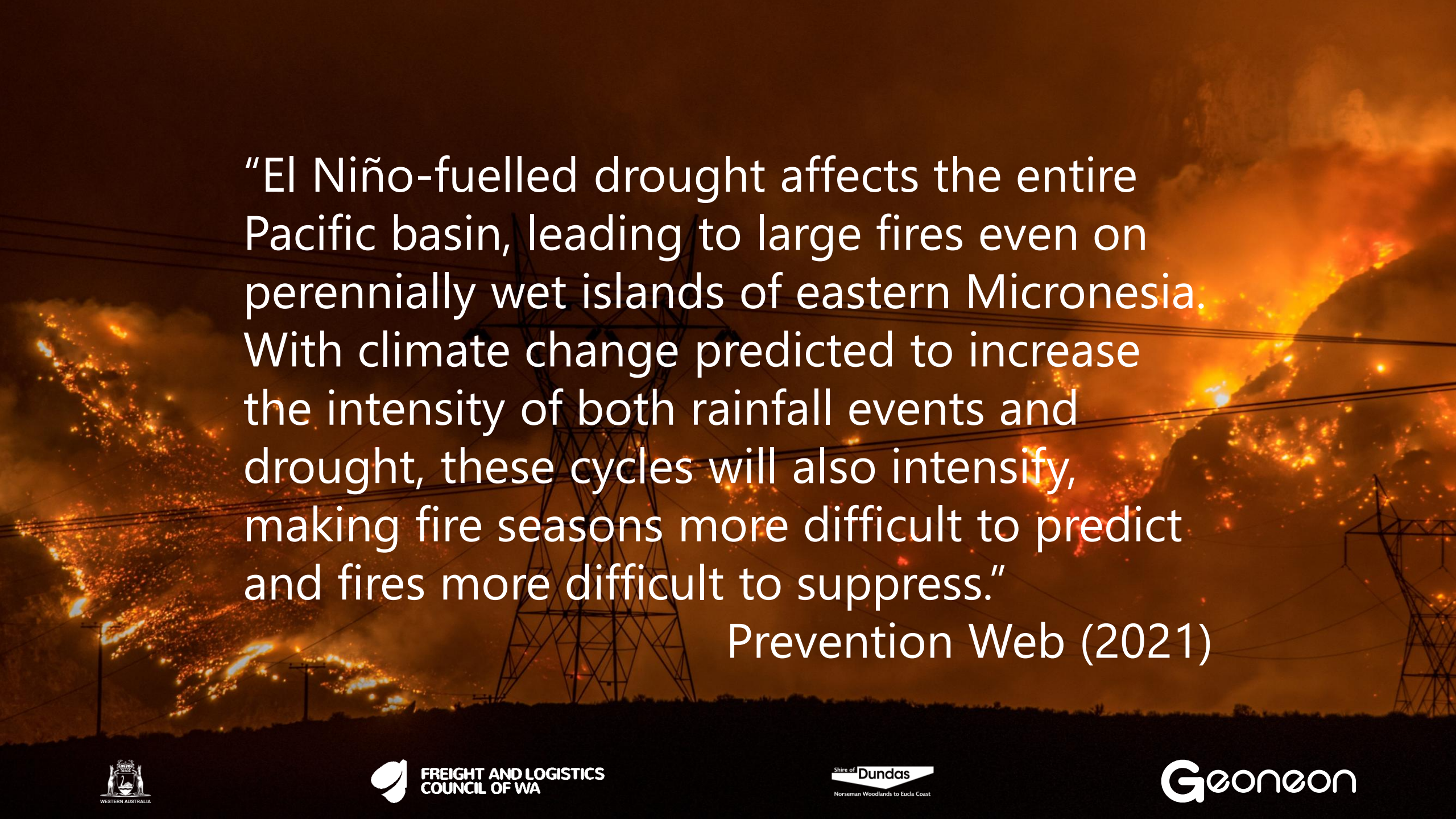
Presenter: Dr. Alex Bandini-Maeder

*Authors: Alex Bandini-Maeder¹, Roxane Bandini-Maeder¹, Peter Fitchat², Drew Gaynor³,
Daryl Glover², Charley Gros¹, Bradley Johnson¹, Pania Turner²*

¹Geoneon, Hobart, Australia (<https://www.geoneon.com/>)

²Shire of Dundas, Australia (<https://www.dundas.wa.gov.au/>)

³Freight and Logistics Council of Western Australia, Australia (<https://freightandlogisticscouncil.com.au/>)



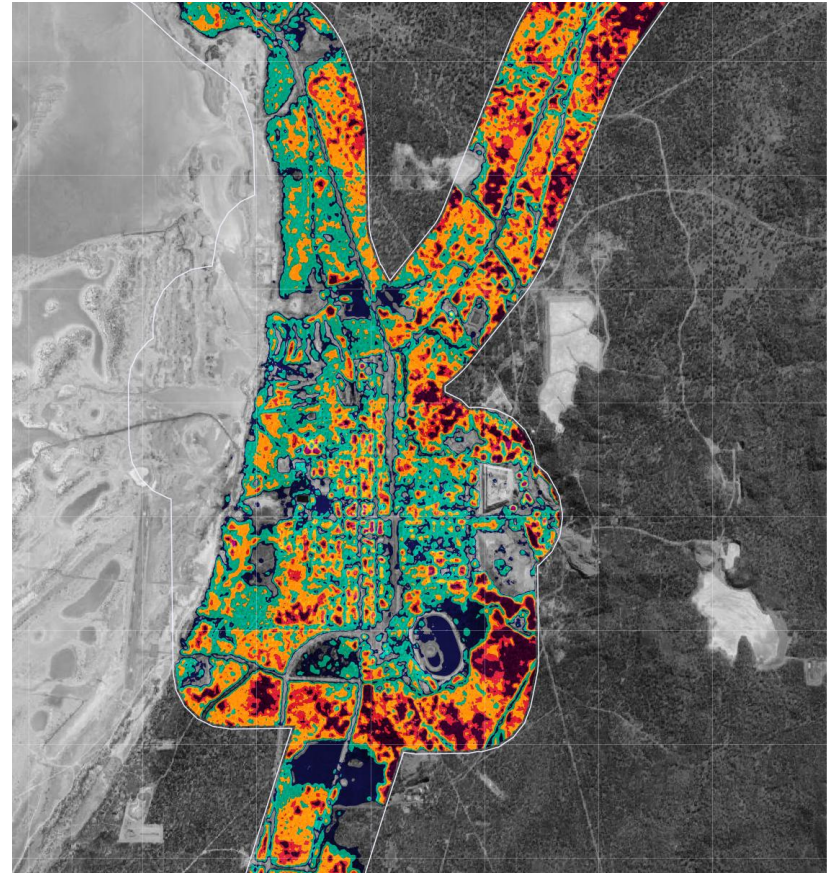
“El Niño-fuelled drought affects the entire Pacific basin, leading to large fires even on perennially wet islands of eastern Micronesia. With climate change predicted to increase the intensity of both rainfall events and drought, these cycles will also intensify, making fire seasons more difficult to predict and fires more difficult to suppress.”

Prevention Web (2021)

Asset Model – Replacement Value



Wildfire Severity and Vulnerability



Severity model



Financial Vulnerability Model



Freight Vulnerability Model

Tree Mapping – Norseman



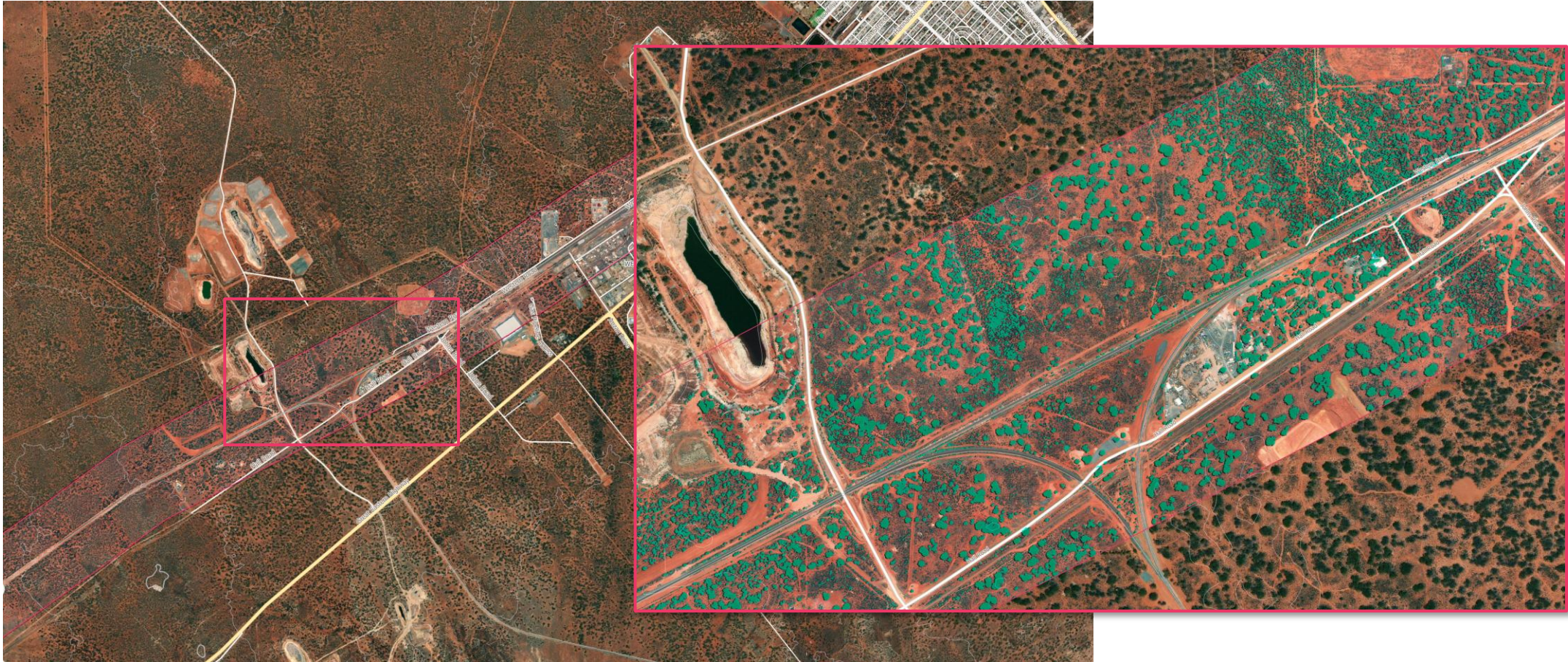
Tree Mapping – Eyre Highway



Tree Mapping – Hyden Norseman Road



Tree Mapping – Kalgoorlie



Tree Mapping – Petrol Station



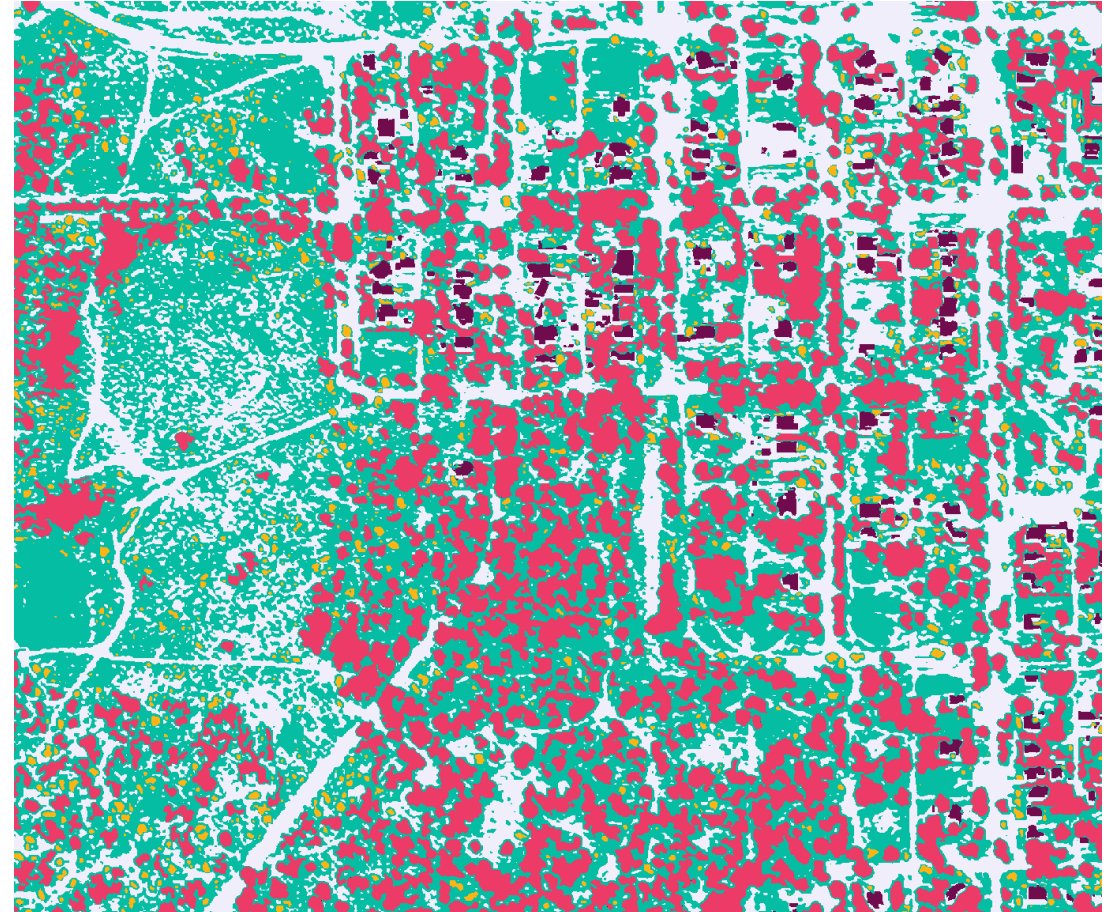
Tree Mapping – NBN Relay



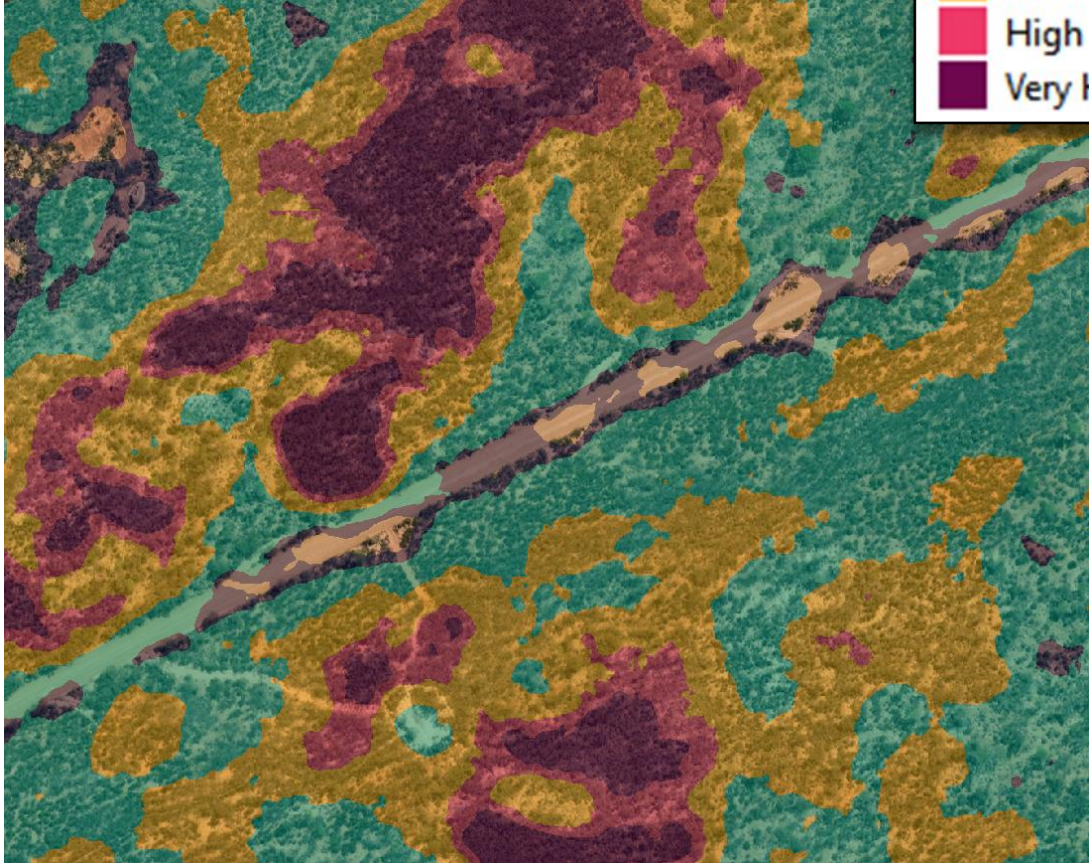
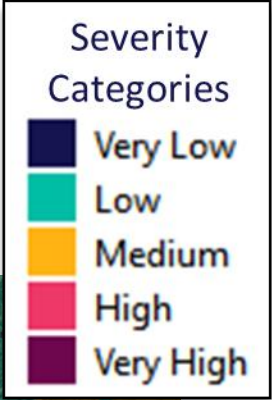
Tree Mapping –Hyden Norseman Road



Fuel Model



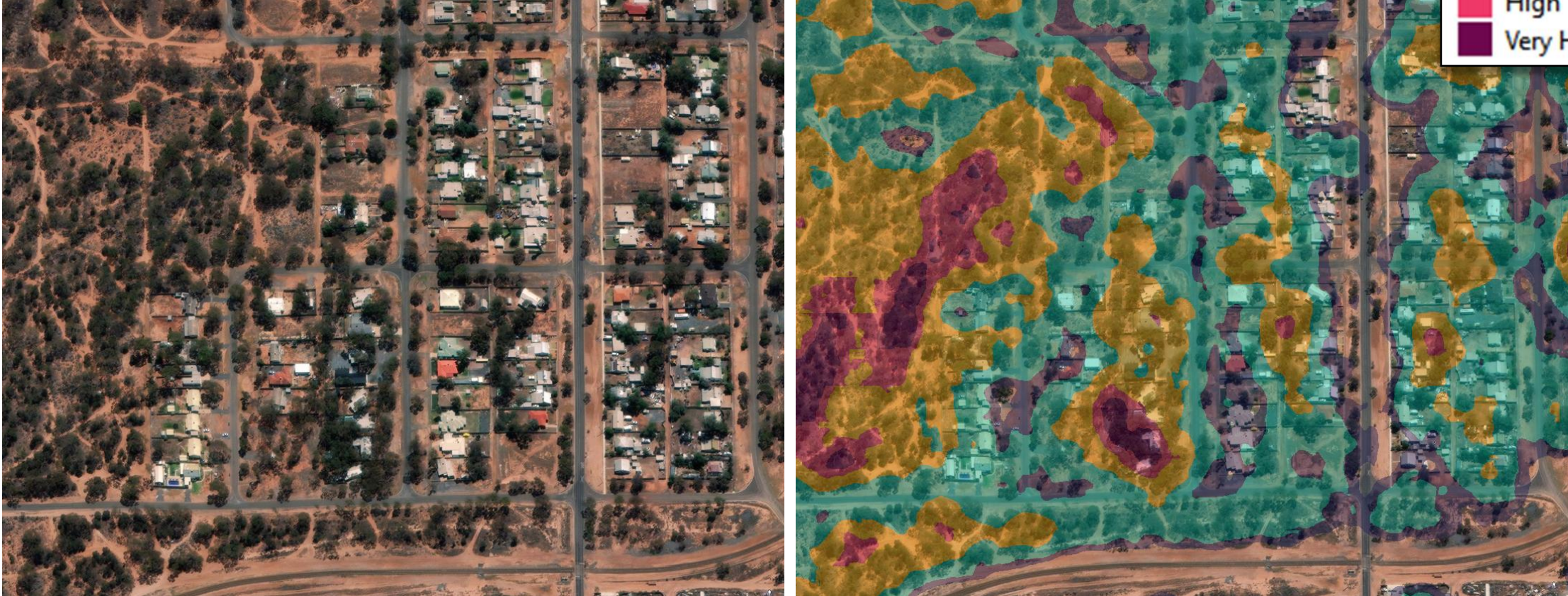
Wildfire Severity Model



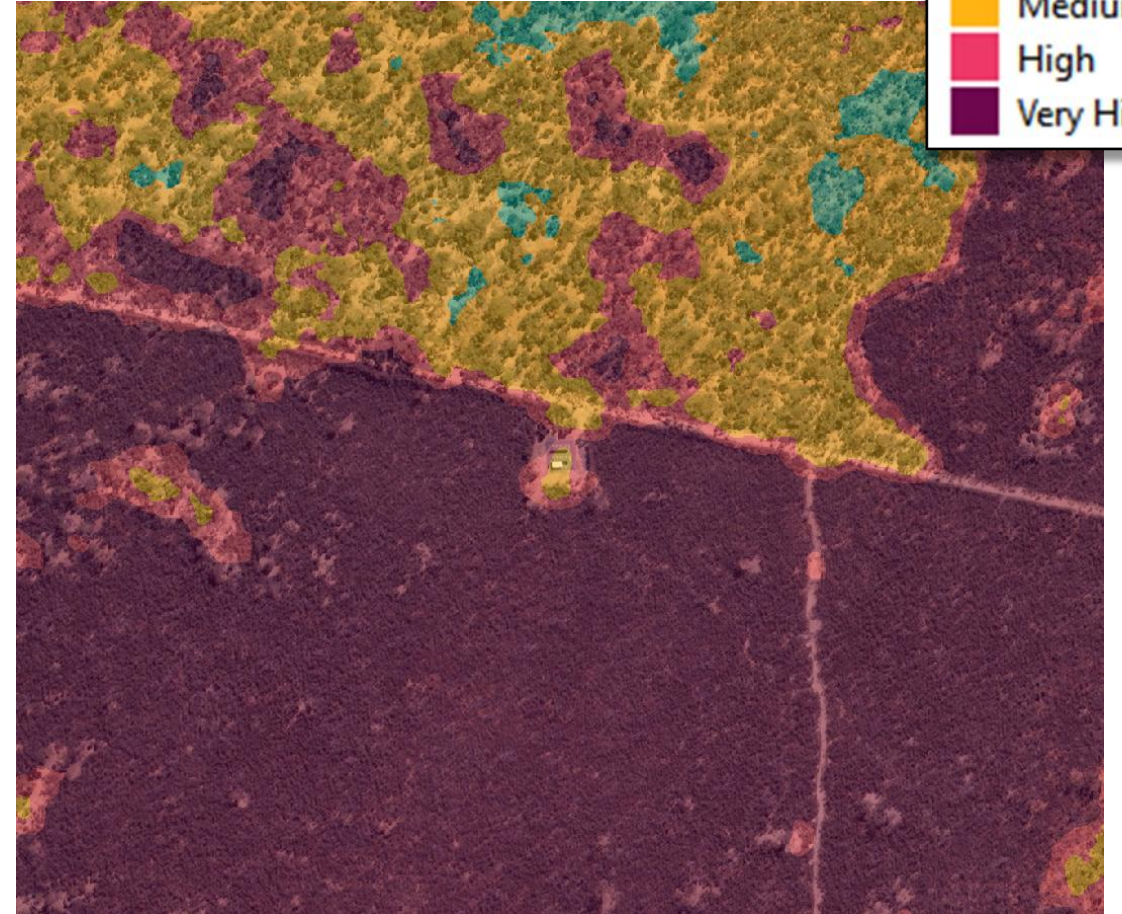
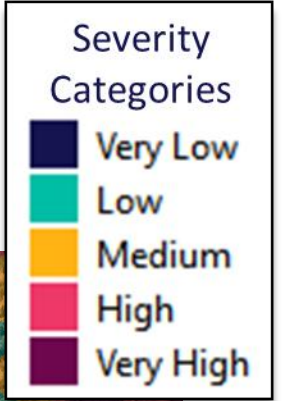
Wildfire Severity Model – Dundas

Severity Categories

- Very Low
- Low
- Medium
- High
- Very High



Wildfire Severity Model – NBN Relay





Alex Bandini-Maeder (CTO & Co-founder)

E: alex@geoneon.com

M: +61 4 2494 3333

W: <https://www.geoneon.com/>

On behalf of Geoneon's team, thank you for your time!