

A Rapid Method for Heatwave Vulnerability Assessment

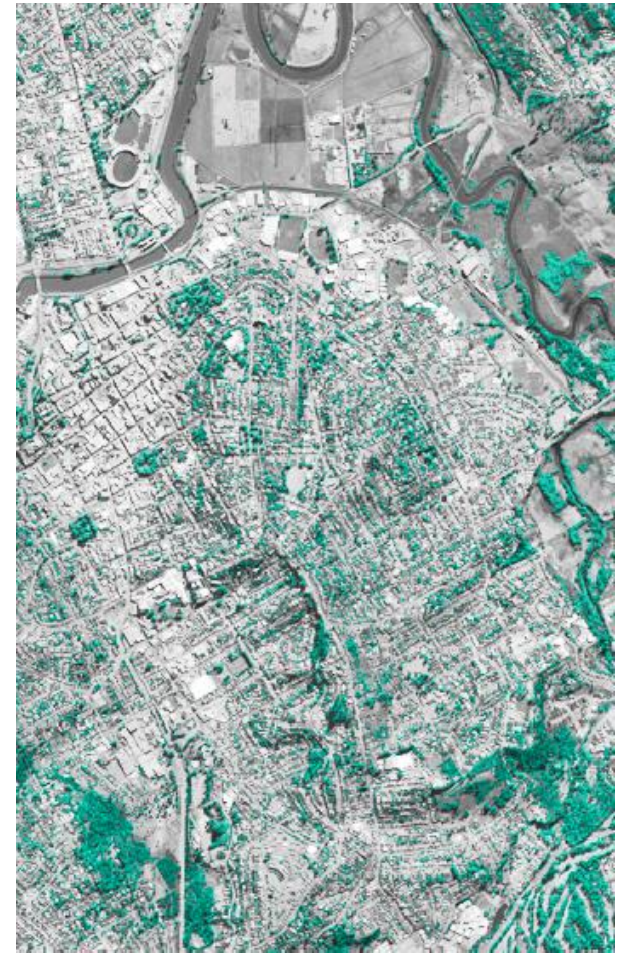
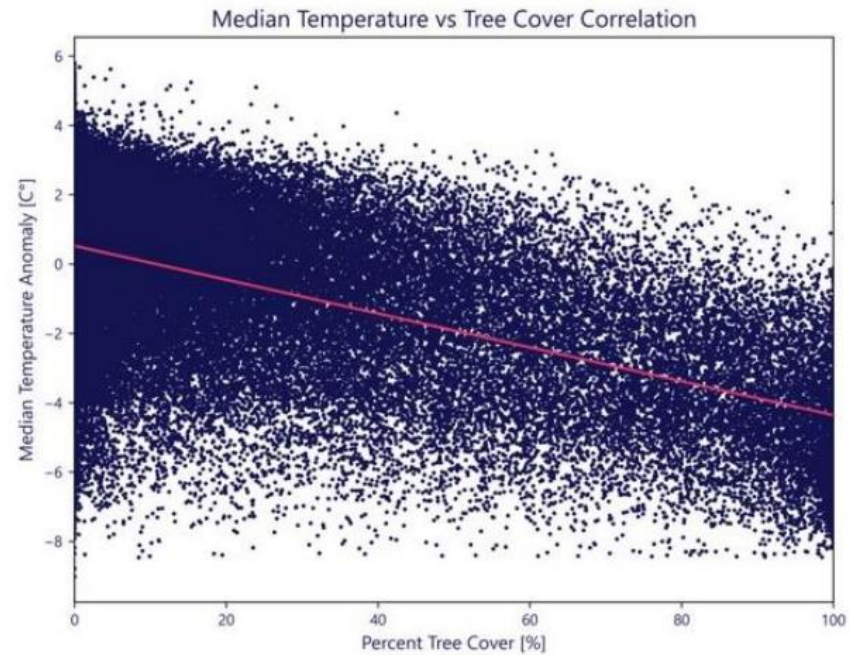
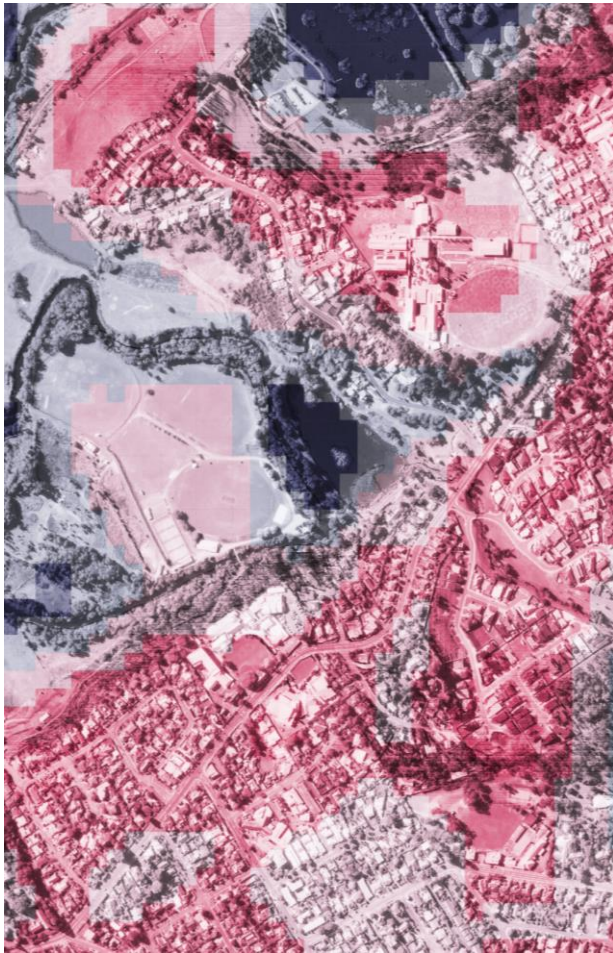
Presenter: Dr. Alex Bandini-Maeder

*Authors: Alex Bandini-Maeder¹, Roxane Bandini-Maeder¹, Jason Byrne², Charley Gros¹,
Bradley Johnson¹, Bethany Melville², Huy-Thong Phan¹*

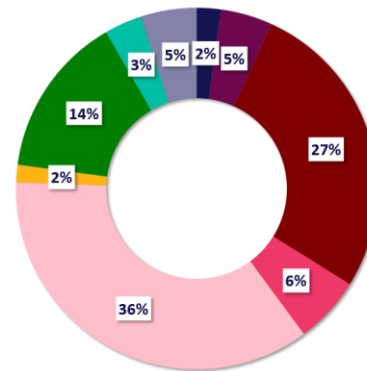
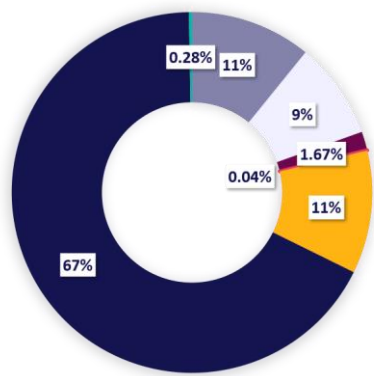
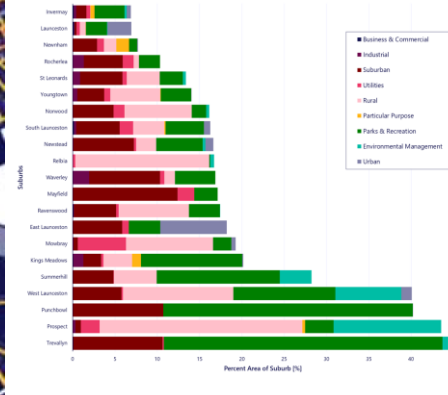
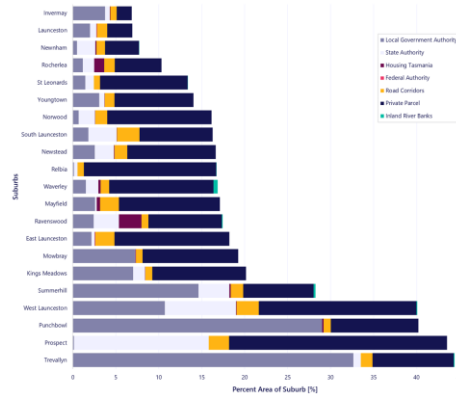
¹Geoneon, Hobart, Australia (<https://www.geoneon.com/>)

²University of Tasmania, Hobart, Australia (<https://www.utas.edu.au/>)

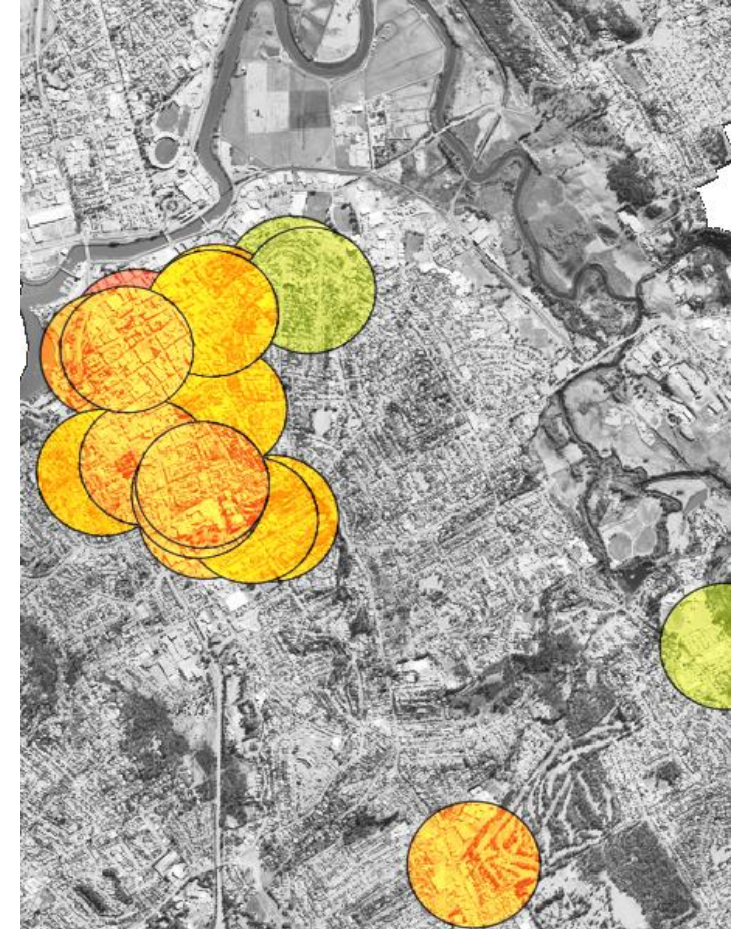
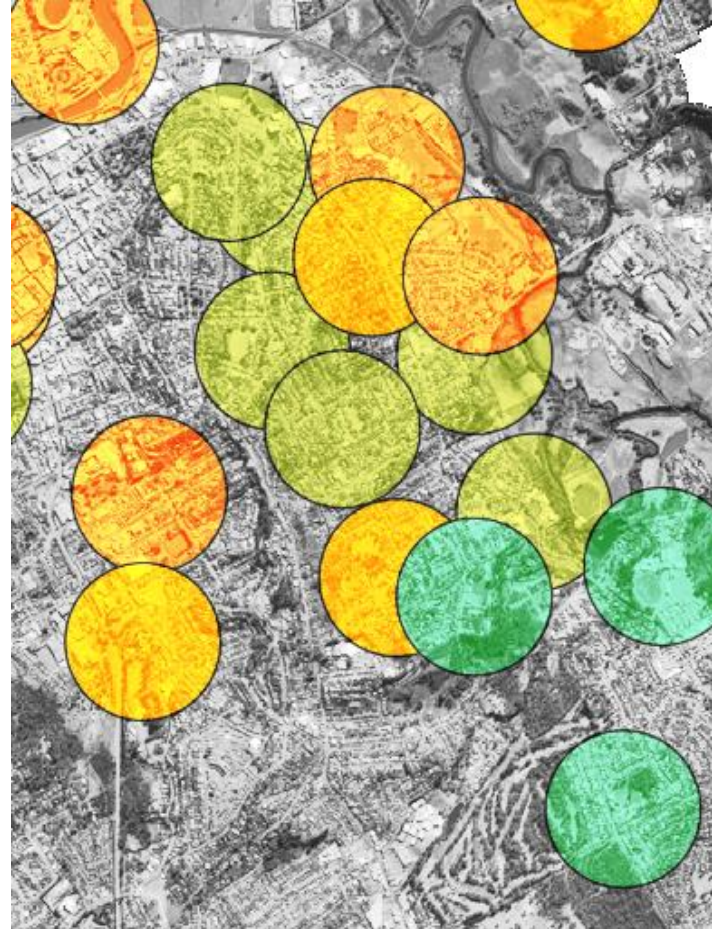
1. LST and Tree Canopy



2. Cadastre and Landuse



3. Bike Lanes, Schools, Health Facilities



4. Socio-economic Vulnerability



5. Prioritisation





Alex Bandini-Maeder (CTO & Co-founder)

E: alex@geoneon.com

M: +61 4 2494 3333

W: <https://www.geoneon.com/>

On behalf of Geoneon's team, thank you for your time!