

Sustainable Community Dynamics in Open Mapping

Can Unen
OSM Trainer
Open Mapping Hub Asia-Pacific



IN COLLABORATION WITH 
Open Mapping Hub
ASIA-PACIFIC



2022 Pacific Geospatial Conference

28 NOVEMBER - 2 DECEMBER 2022
SUVA, FIJI

Digital Platforms, GIS and Remote Sensing to anticipate and manage impacts of Global Warming



IN COLLABORATION WITH 
**Open
Mapping
Hub**
ASIA-PACIFIC





The Humanitarian
OpenStreetMap Team is an
international team dedicated
to **humanitarian action** and
community development
through **open mapping**.



HOT is working towards a world where...

...community needs are addressed through mapping.

...everyone can access and contribute to the map.

...open map data is available and used for impact.



HOT



Support humanitarian response by creating open source maps and data to respond to disasters and reach target communities



Mobilize contributors to generate map data for development and humanitarian aid



Support OSM communities to prepare for and respond to disasters and local development challenges



Tech: Develop free, user-friendly open source mapping tools



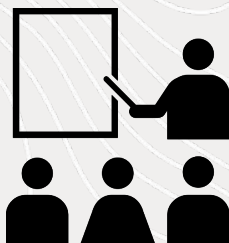
Grantmaking for Open Mapping Organisations and Communities to address local challenges



Data quality: Monitor data quality and validate maps



Partnerships: Co-create maps for impact with organizations worldwide.

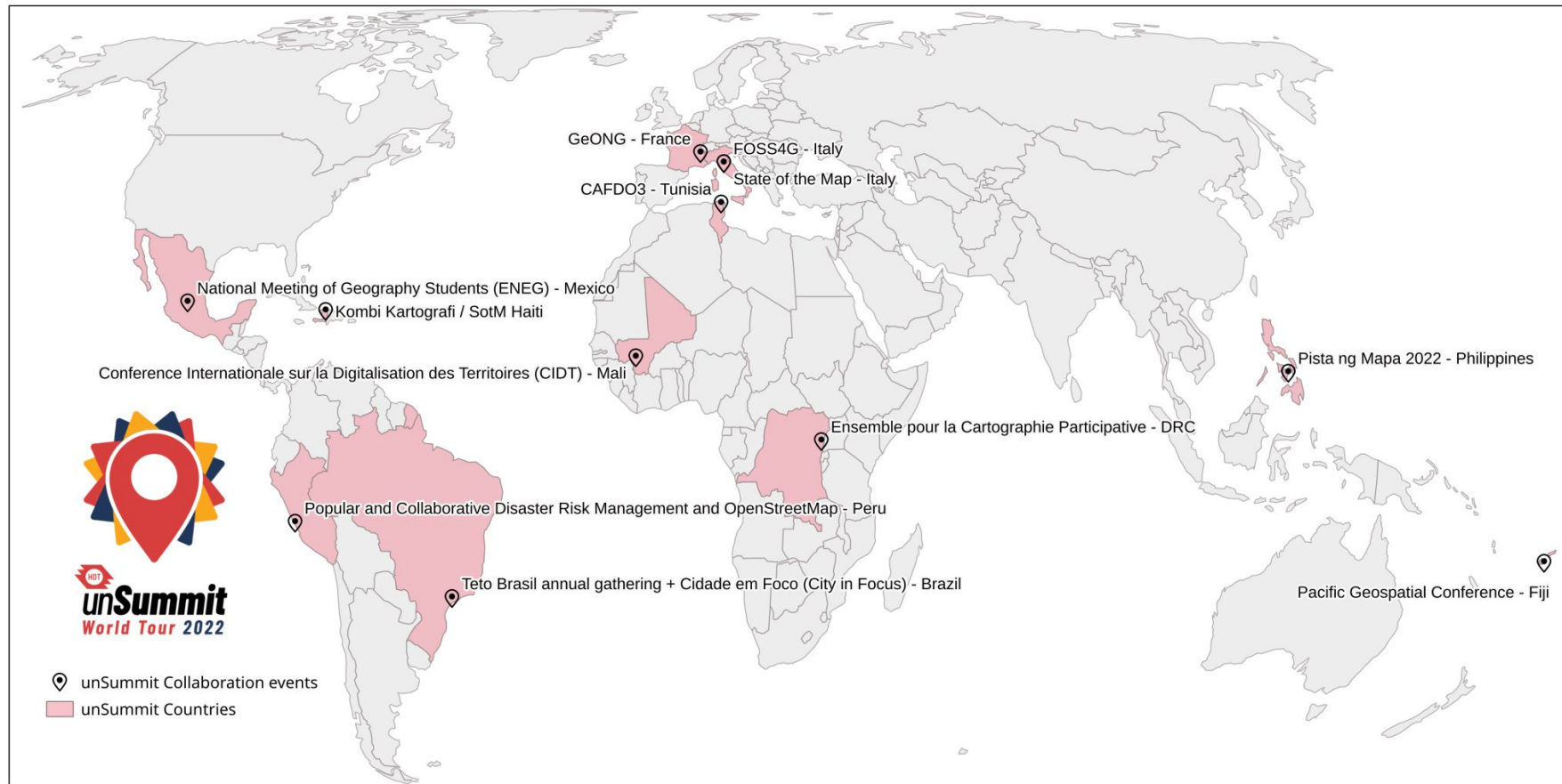


Capacity development: Provide mentoring, internships, peer-training, skillsharing

WHAT WE DO



What are we doing here?



OSGeo Oceania

OpenStreetMap SIG

OpenStreetMap has evolved from a community mapping project into a critical geospatial database for many individuals and organisations around the world. It plays this role while still retaining its essence as a community driven project. This is particularly true in Oceania, where many of the contributions are driven by volunteers, as opposed to other countries where corporate, government, and NGO involvement is significantly higher.

OpenStreetMap Data

You are free to:

- **View**
- **Download**
- **Use**
- **Modify**
- **Redistribute**
- **Sell**
- **Contribute**



Map data: Openstreetmap Contributors, 2022

Free as in "free speech" not "free beer"

A Functioning Community

Data collaboration on common goals on a multi-actor scale:

- Local Gov't - **governance use**
- NGO & Civil Society - **humanitarian use**
- Private Tech Sector - **commercial use**
- Academia - **academic use**
- Volunteers - **hobby use**

Why Universities?

Open mind <-> open data

Continuous intake to the community

Source of data experts & community leaders



IN COLLABORATION WITH



**Open
Mapping
Hub**

ASIA-PACIFIC



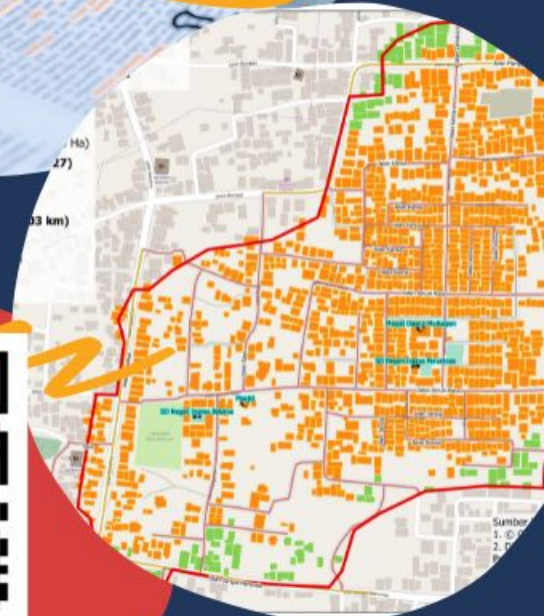
UNIVERSITY ENGAGEMENT STUDENT CLUB SPONSORSHIP

Flexible funds up to **\$1000** available for a wide-range
of OSM activities.

Deadline

26 AUGUST 2022

**Apply using the link or barcode ->
tiny.cc/omhapuni**



2nd Sponsorship Call

15 new student clubs to be supported

Deadline of application: Dec.1, 2022

**PLEASE APPLY &
SHARE WITH YOUR
NETWORK!**



tiny.cc/omhapuni

OPEN MAPPING IN THE CLASSROOM

Please provide your experiences, comments or requirements on:

- **Student communities & networks**
 - **Open Mapping in the curriculum**
 - **Open mapping research**
- at your university.**



tiny.cc/openmappingclassroom

Why Tech Communities?

Play in commercial use & humanitarian use through social entrepreneurship.

OSM Hackfest

- **Introduce tech communities to the OSM ecosystem through OSM tech stack.**
- **Awareness about learning and career opportunities in these ecosystems.**
- **Provide hands-on experience on OSM data and developing data products.**
- **Engage to build tools to create local impact, utilizing OSM data and services.**

Hackfest 2022



tiny.cc/osmhackfest



Hackfest 2023

**Call for partnerships to conduct national
Hackfest events open:**



tiny.cc/osmhackfest2023

Thank you.
Questions?



can.unen@hotosm.org