



## Your proposal: Yadrava na Vanua : Measurement Reporting and Verification of forestry resources and landscape restoration projects

Nicholas Metherall, Lanieta Roko, Arti Reddy, Lency Muna, Salote Nasalo, Talei Caucau, Pauline Vinaka, Cema Talei, Juan Torres-Battlo, Nathan Wales, Hilda Sakiti Waqa, Elisabeth Holland, Francis Chottu, Michael Dyer, Xuan Nguyen.





# LANIETA ROKOTUIWAKAYA

## LEAD FOR GIS AND REMOTE SENSING OF FORESTS, YADRAVA NA VANUA



Lanieta  
Rokotuiwakaya

Nicholas Metherall, Lanieta Roko, Arti Reddy, Lency Muna, Salote Nasalo, Talei Caucau, Pauline Vinaka, Cema Talei, Juan Torres-Battlo, Nathan Wales, Hilda Sakiti Waqa, Elisabeth Holland, Francis Chottu, Michael Dyer, Xuan Nguyen.





# OUTLINE

## **2.5 mins Lanieta Rokotuiwakaya**

1. Background
2. Space for Planet Earth Challenge
3. Our team
4. Our remote sensing approach
5. Fieldwork methods

## **2.5 mins Francis Chottu**

1. Ongoing research on erosion risk
2. Working with villages to establish nurseries
3. Plans for nurseries and designs
4. Plans for planting along river banks
5. Conclusions



# SPACE FOR PLANET EARTH CHALLENGE

## OBJECTIVE:

To use space technologies to estimate carbon sequestration...

We brought together three sub-teams:

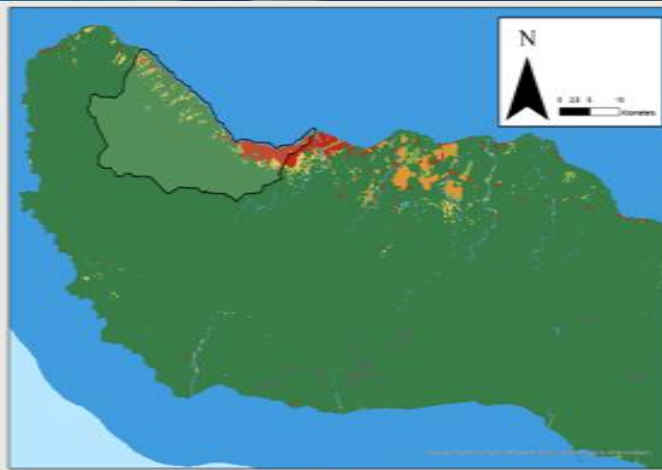
1. Mangroves
2. Forests
3. GIS + Remote Sensing

## PRESS RELEASE OUR TEAM:

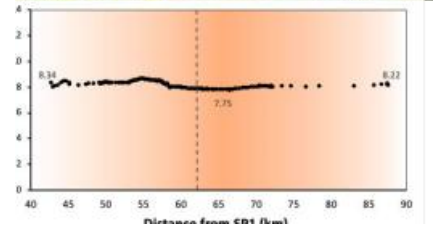
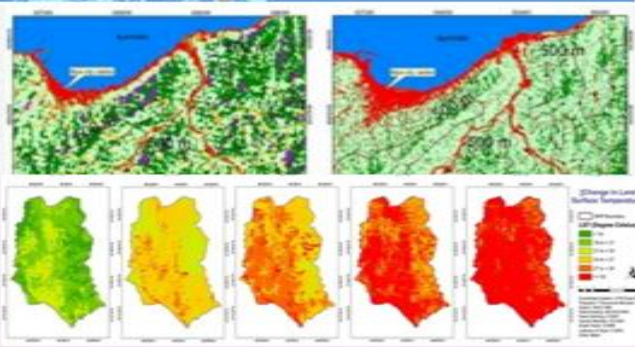
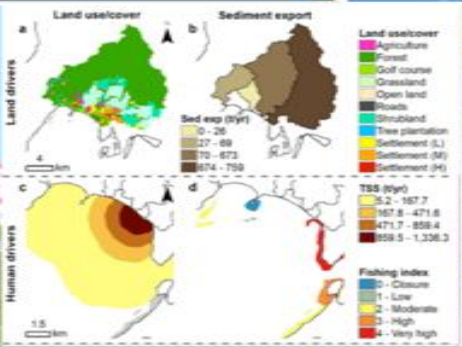
'Yadrava Na Vanua' From Fiji wins Grand Prize for Space for Planet Earth Challenge



# OUR REMOTE SENSING APPROACH



Multiparameter datasets





# FIELDWORK - FORESTRY INVENTORIES





# FRANCIS CHOTTU

## LEAD FOR DESIGN AND CONSTRUCTION

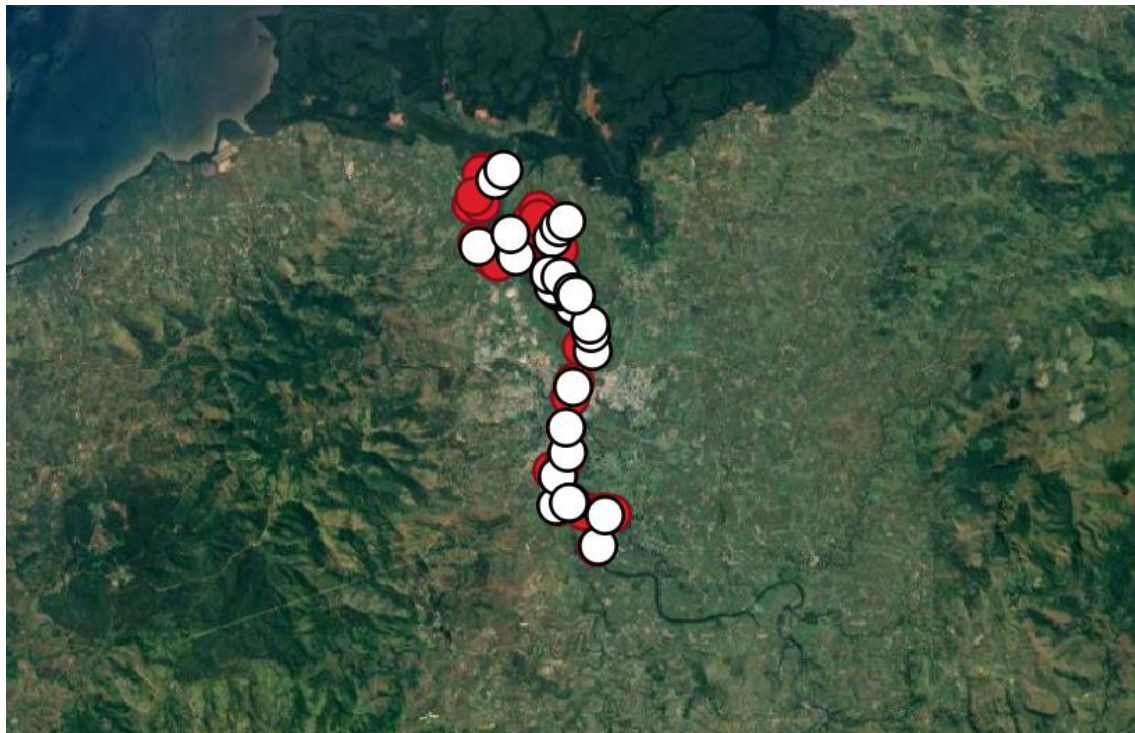


Francis Chottu

Nicholas Metherall, Lanieta Roko, Arti Reddy, Lency Muna, Salote Nasalo, Talei Caucau, Pauline Vinaka, Cema Talei, Juan Torres-Battlo, Nathan Wales, Hilda Sakiti Waqa, Elisabeth Holland, Francis Chottu, Michael Dyer, Xuan Nguyen.



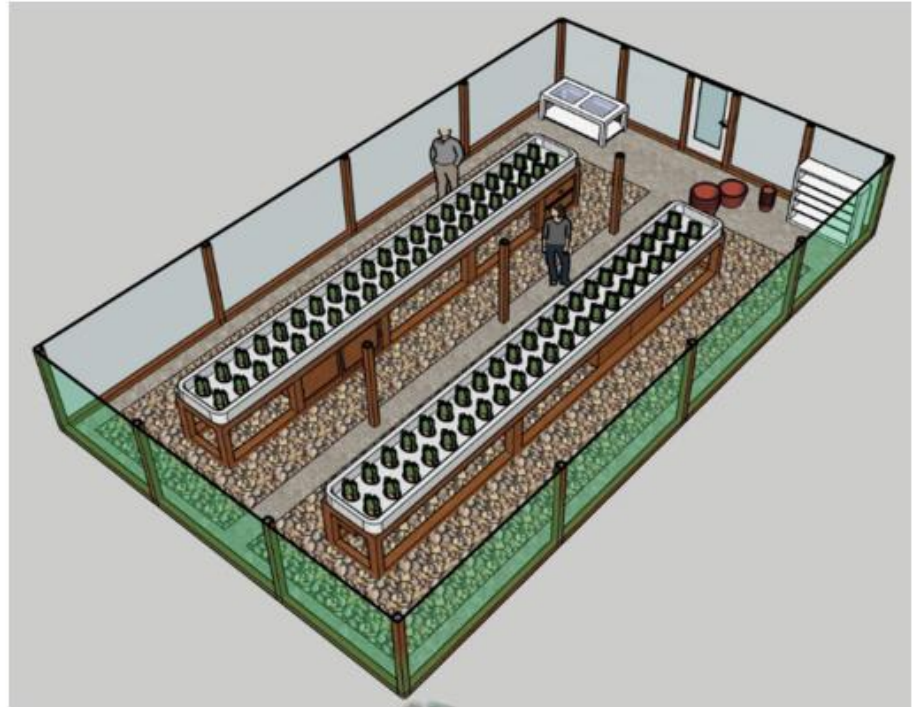
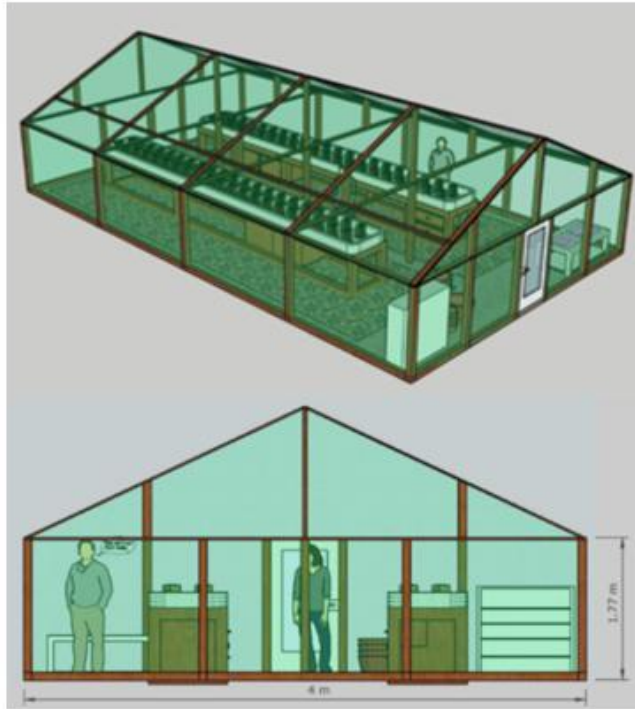
# ONGOING RESEARCH (EROSION RISK)



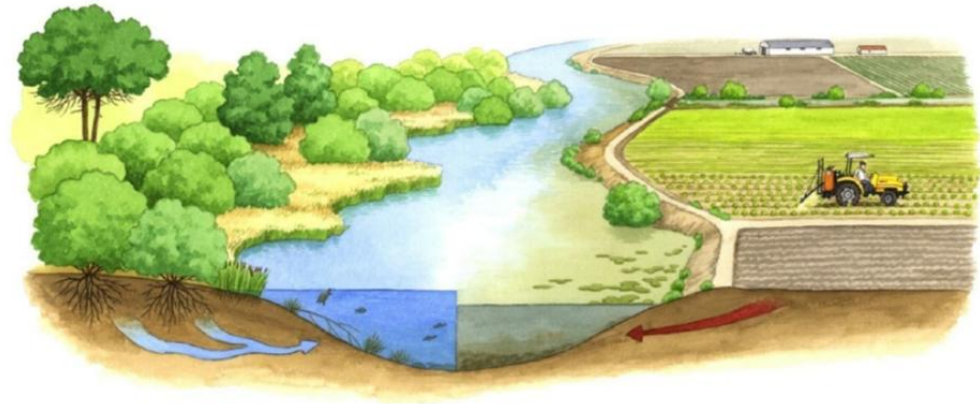
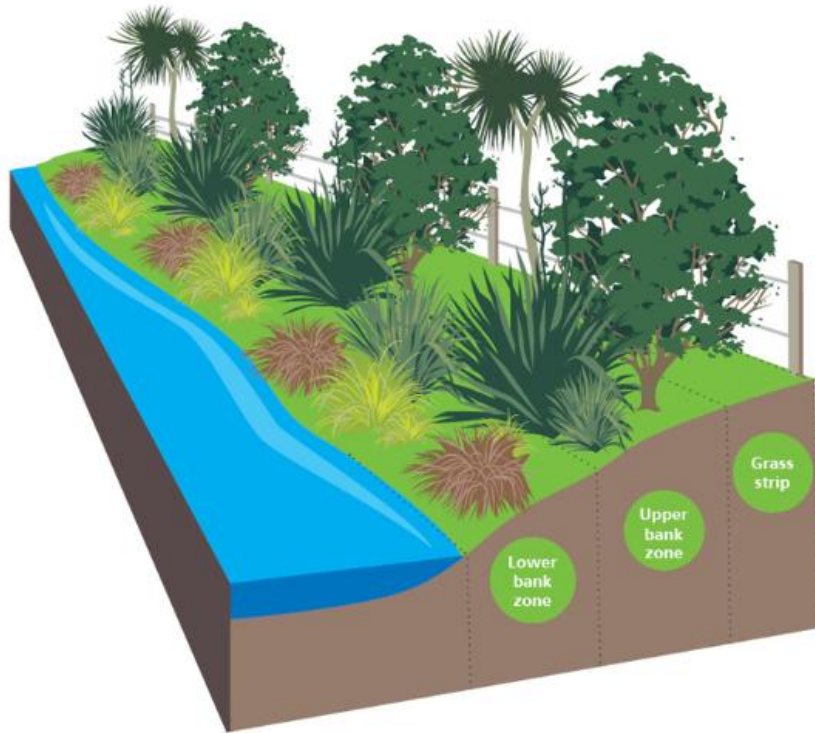


# NURSERIES (PLANS AND DESIGNS)

Designed using Sketchup software



# ENVIRONMENTAL PLANTINGS





# CONCLUSIONS

1. Role of GIS and remote sensing
  - a. For site selection
  - b. Monitoring progress
2. Multiple roles of riparian vegetation
3. Remote sensing increasingly important in monitoring carbon stock sequestration